

Create just the right setting ... anywhere.



Home is where the heart is ... and anywhere else you want to make it.

One home is near family. The other is in your own private spot, where you can fish, golf or just relax for whole seasons at a time. When you divide your time between two places, you want them both to feel as comfortable and permanent as possible. In Cove™ Park Trailer by Jayco®, you'll feel at home no matter where you spend your time. So sit back, kick off your shoes and stay a while.



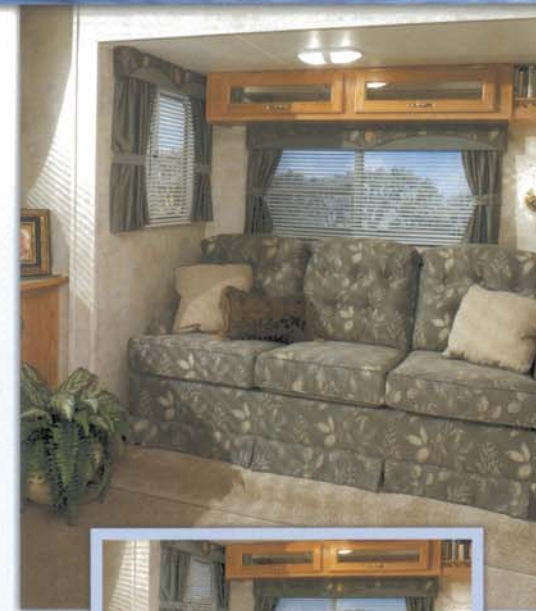
The Executive Dolby® Digital 5.1 Home Theater System with DVD surround sound, included in the Customer Value Package, lets you sit down to a movie no matter where you are.



The roomy dinette/sofa slideout greatly increases your living space. The optional free-standing oak table with four chairs gives you a tasteful place to enjoy dinner.



The kitchen features residential-style amenities such as an acrylic sink, mixing faucet, Kenmore® 16-cu.-ft. refrigerator and 21" oven.



The standard hide-a-bed sofa easily converts to a comfortable bed to expand your sleeping arrangements.



The large rear scenic window (38 RLS) lets you enjoy beautiful panoramic views from your own living room.



38 RLS interior

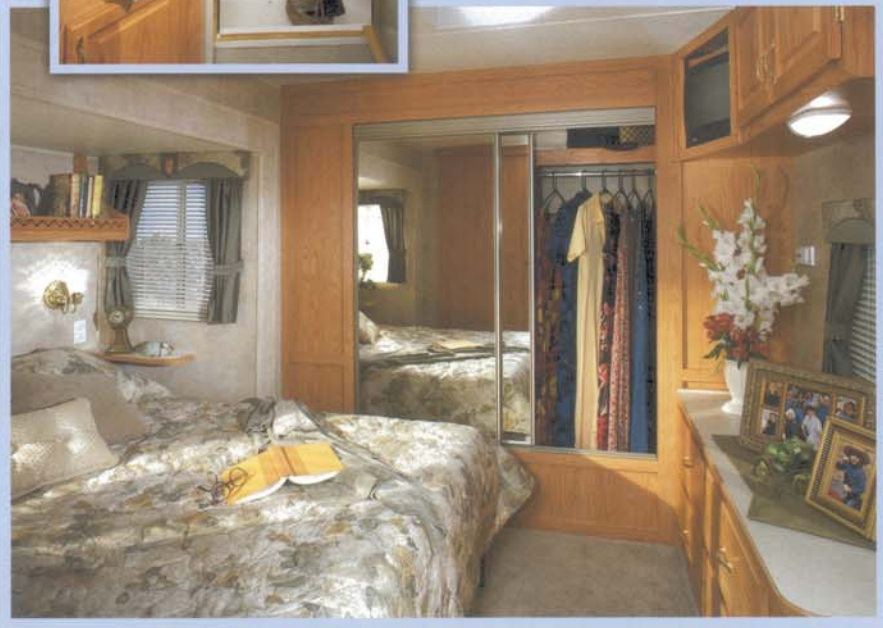




The bathroom provides everything you need for an extended stay, with a garden tub and glass shower door, power bath vent and skylight.




The optional stackable washer/dryer means you won't have to leave your home to do laundry.



Get more space in the bedroom. The front wardrobe gives you plenty of storage space. The 60" x 80" innerspring queen bed gives you plenty of sleeping space. And the standard slideout gives you more living space.

We back what we build



The Jayco **2+3 Warranty** is a manufacturer's warranty. It doesn't come from your dealer, and it's not an extended warranty! It comes from the people who build Jayco recreational vehicles to the people who buy them. Each Jayco is warranted to the original purchaser for twenty-four (24) months from the date of purchase against defects in materials and workmanship. This is full hitch-to-bumper coverage on towables and bumper-to-bumper on motorized RVs. The Jayco warranty includes a three-year (3) structural guarantee. In addition, our warranty is transferable within the first two (2) years for a \$100 processing fee. Go ahead and compare the Jayco warranty with other manufacturers' warranties. You'll find it's the best in the business! For a copy of the warranty with full terms and conditions, ask your local Jayco dealer or visit our Web site.

2005 Cove™ Park Trailer interior color selections



Clearwater

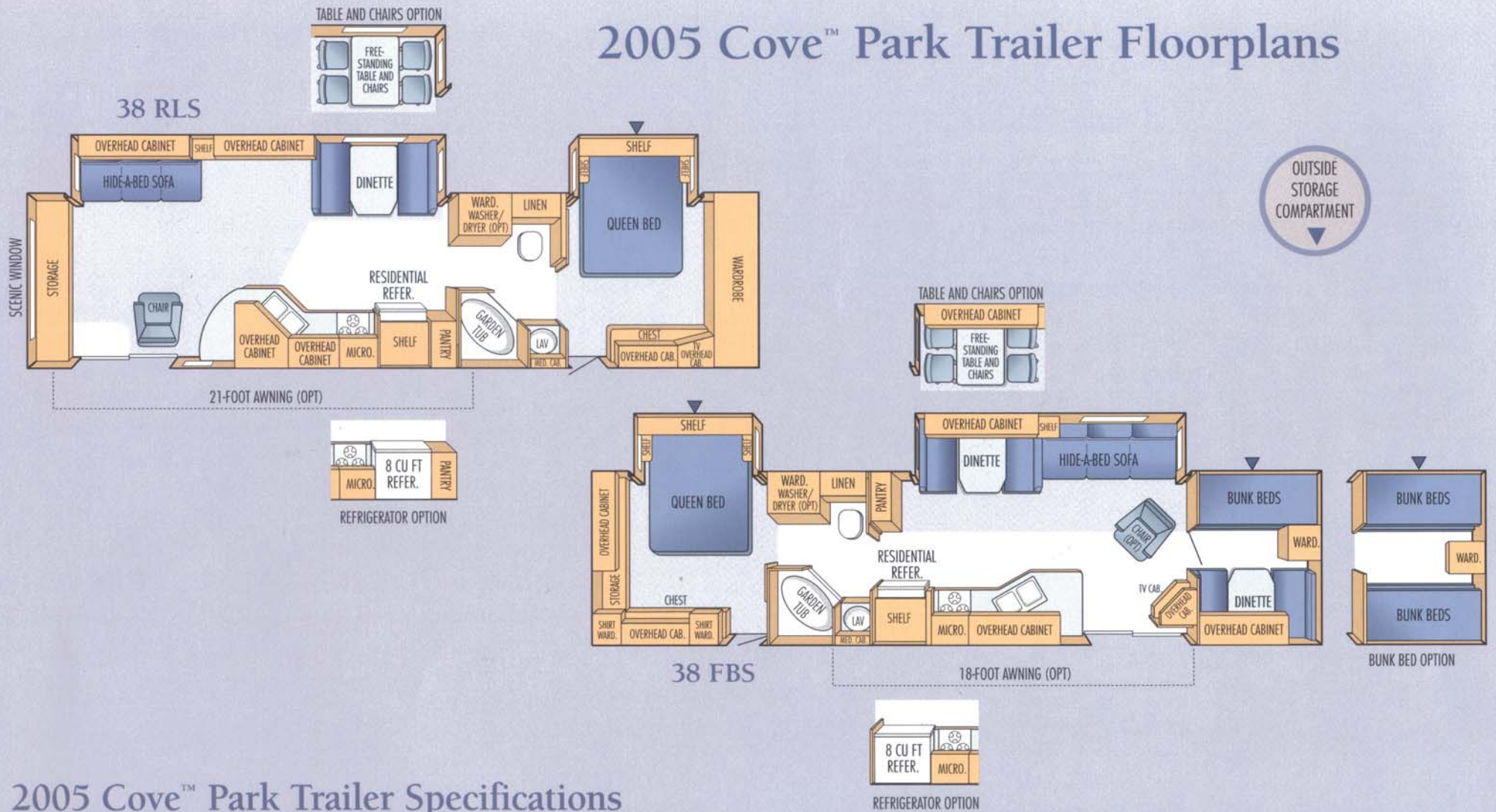


Rosewood



Spearmint

2005 Cove™ Park Trailer Floorplans



2005 Cove™ Park Trailer Specifications

| Models | Exterior Length | Exterior Height | Bedroom Interior Height | Unloaded Vehicle Weight (lbs.) | Dry Hitch Weight (lbs.) | Gross Vehicle Weight Rating (lbs.) | Cargo Carrying Capacity (lbs.) | Fresh Water Capacity [^] (gals.) | Gray Wastewater Capacity (gals.) | Toilet/Black Wastewater Cap. (gals.) |
|---------------|-----------------|-----------------|-------------------------|--------------------------------|-------------------------|------------------------------------|--------------------------------|---|----------------------------------|--------------------------------------|
| 38 RLS | 39'-11" | 138" | 84" | 8385 | 1230 | 11,700 | 3315 | 60 | 90 | 45 |
| 38 FBS | 39'-11" | 138" | 84" | 8420 | 1015 | 11,700 | 3280 | 60 | 90 | 45 |

[^]Includes Water Heater

Unloaded Vehicle Weight (UVW): Sometimes referred to as "Dry Weight," UVW means the typical weight of this trailer as built at the factory. The UVW, as used in product literature and other promotional materials, does not include cargo, fresh water, LP gas, options or dealer-installed accessories.

Gross Vehicle Weight Rating (GVWR): GVWR means the maximum permissible weight of the trailer, including the UVW plus passengers, personal items, all cargo, fluids, options and dealer-installed accessories. The GVWR is equal to or greater than the sum of the UVW and the CCC.

Cargo Carrying Capacity (CCC): CCC means the maximum weight of all passengers, personal items, food, fresh water, LP gas, tools, other cargo and dealer-installed accessories* that can be carried by the trailer. CCC is equal to or less than GVWR minus UVW.

*The addition of options will decrease the CCC.

It is important for your safety and enjoyment that your tow vehicle be adequately sized and equipped to tow and handle the GVWR of the RV you select. Review weights and rating of your tow vehicle and consult a competent advisor for questions

or advice. Whether you are new to RVing or a veteran, get a feel for the performance of your tow vehicle and the RV together before heading out on the roadways. **When you tow an RV, you must drive differently than you do when driving a single vehicle.** Practice hooking up, driving, backing up and braking in a safe environment or seek out professional instruction.

See specification chart above. Jayco® affixes a weight label to each new RV which lists weight information for that vehicle.

2005 Cove™ Park Trailer Standards and Options

STANDARD KITCHEN FEATURES

Residential-style mixing faucet
Residential-style acrylic sink
Sink cover cutting board
Color-coordinated self-edged countertops
Residential refrigerator (16-cu.-ft.)
Microwave with carousel
21" oven
Range hood with light and fan
3-burner range w/9000-BTU SuperBurner™ and piezo igniter
* Range cover
Wallpaper border
* Raised-panel oak doors
Trash can
Residential drawer guides
* Large dinette picture window
* Dinette door and drawer

STANDARD HEAT, POWER AND WATER FEATURES

Twin 30-lb. LP gas tanks with regulator
Plumb-Pex® water lines
Water heater bypass system
City water hookup
Systems monitor panel
12V electrical system with 45-amp. 110V converter
IOTA power center
* 10-gal. gas/electric DSI water heater
30-amp. power cord
110V exterior electrical receptacle (1)
Auto-ignition furnace with thermostat
In-floor ducted heating
13,500-BTU central Air Conditioner
* TV antenna with booster
* Fresh water tank with 12V pump
* Prewired for power vents in bedroom and rear living room

SAFETY FEATURES

LP leak detector
Fire extinguisher
Smoke detector
Multiple egress windows
Dead bolt lock on entrance door

STANDARD EXTERIOR FEATURES

15" tires
EZ Lube® axles
Battery rack in A-frame
2000-lb. tongue jack with foot pad
5/16" heavy duty chains
Lockable radius storage compartments with grab handles
Duratex™ underbelly covering
Rotocast holding tanks
Retractable triple entrance steps
Patio light with inside switch
60" x 72" patio door
Exterior entry door assist handle
White radius-cornered safety glass windows
ABS double LP bottle cover
Bumper with drain hose carrier
Colored radius skirting
Rubber roof w/12-year warranty
Rain gutters with downspouts

STANDARD BEDROOM FEATURES

Innerspring mattress (60" x 80" queen bed)
Bed lifts up easily on struts with storage below
Coordinated quilted bedspread
TV overhead cabinet
Bedroom slideout
* Raised-panel oak doors
Dresser with drawers
22" x 68" white radius-framed smooth fiberglass entrance door
Roof vent
Night stand shelves next to bed in slideout room
Brass wall lighting (2)

STANDARD INTERIOR FEATURES

3 color-coordinated interiors
* Raised-panel oak doors
Linoleum entryway
Deep-pile trackless carpeting with thick pad
Coordinated decorator fabric throughout
Fabric-covered box valances, drapes and tiebacks
Mini blinds
Cable TV hookup
Overhead cabinets above sofa & dinette in slideout room w/mirror inserts
Flush floor slideout
Slider windows on slideout end walls
Brass wall lighting
* Rocker recliner (1) (38 RLS)
* Electric slideouts – living room and bedroom

* New for 2005

STANDARD BATH FEATURES

* Power bath vent with frosted lens
ABS 39" garden tub with surround (38 FBS, 38 RLS)
Wood medicine cabinet with mirror
* Glass shower door
* Bath skylight
Towel holder
Flat panel oak doors
Large sink bowl
Color-coordinated countertops with T-molding
* Foot flush toilet

OPTIONAL FEATURES

Front twin beds with bunk (38 FBS)
Oak free-standing table w/4 chairs
Rocker recliner (1) (38 FBS)
* High gloss exterior fiberglass
Thermal pane tinted safety glass
Insulated holding tanks
Large double-door refrigerator (8-cu.-ft.)
Washer/dryer prep (requires 50-amp. service option)
Stackable washer/dryer (requires 50-amp. service option)
50-amp. service
Center tension rafter

Customer Value Package

- 15,000-BTU central Air Conditioner
- Folding exterior grab handle
- Attic fan in bath with wall switch
- Dolby® Digital 5.1 Home Theater System with DVD
- Water purifier
- Day/night shades
- Extra roof insulation (R-11)
- Phone jacks (2)
- Patio awning
- Stabilizer jacks
- Hide-a-bed sofa
- Outside shower

See dealer for further information and prices.



FAMILY OWNED. FAMILY FOCUSED.

Jayco, Inc. P.O. Box 460 Middlebury, IN 46540
www.jayco.com



As a Jayco owner, you can be part of the Jayco Jafari International Travel Club. Ask your dealer about the Jafari "flight" in your area, write Jayco direct or visit our Web site.

Please Note: All information in this brochure is the latest available at the time of publication approval. Jayco reserves the right to make changes and to discontinue models without notice or obligation.

Pictures in this brochure may show optional equipment. RVs built for sale in Canada may differ to conform to Canadian codes.

Printed on recycled paper.

©2004 Jayco, Inc. 0104-15M Litho in U.S.A.

