

OCTANE  
ZX

2008 OCTANE ZX Lite Weight Toy Haulers by Jayco®



LOAD-CARRYING  
MARVEL

FREAKISHLY LIVEABLE





WELCOME TO THE  
HOME TO ONE OF THE  
LIVEABLE LIFESTYLES  
THIS LITE WEIGHT VEHICLE IS TOWABLE  
IT'S ALSO FULL OF ASTONISHING STAND  
SOUND SYSTEM WITH KICKER® SPEAKER  
THAT'S WHY THE OCTANE  
A TRUE FREAKAZOID AMONG THE



TURNING  
EARS ON  
FIRE

Turn your ears on fire with the optional Kicker® subwoofer and amplifier. The Customer Value Package includes an AM/FM stereo, Kicker® speakers, iPod® charger/adaptor and Kenwood® CD receiver.





OCTANE ZX SHOW  
THE MOST FREAKISHLY  
TRUCKS IN ALL THE LAND!  
BY MOST PICK UP TRUCKS AND SUVS  
WARD FEATURES LIKE THE IPOD®-READY  
RS AND AN AMAZING 2-YEAR WARRANTY  
E REALLY IS  
TOY HAULERS.



## LOAD-CARRYING MARVEL



Haul your toys securely with Octane's rugged garage. Tie-down rings, each rated for 2,500 pounds, keep ATVs, side x sides, motorcycles and other toys secure, while the optional 25-gallon fuel station keeps your toys refueled throughout your road trip. Once you're settled, the garage transforms into a living room—the perfect place to just kick back.



# MIND-BOGGLING VERSATILITY

After a day of burnin' up the track or bustin' through rough terrain, Octane ZX's versatile space evolves to fit your lifestyle. You can raid the refrigerator, play cards, turn on a movie or crash for the night with up to eight of your friends. Octane's versatility makes it one mind-boggling toy hauler that does far more than just haul toys.



## A GREAT YEAR TO BUY

In honor of Jayco's 40th Anniversary, we've added special features to selected 2008 Octane models including an electric awning and a flat screen LCD TV. Ask your Jayco dealer for complete details.







**Above:** Octane's durable handcrafted Oak cabinets, residential style sink, three-burner range and convection microwave are perfect for making life on the road more like life at home.

**Far left:** After a day of playing hard, you can refresh in the Octane's bathroom.

**Middle left:** Dual electric queen beds lower over Octane's storage space to create ample sleeping options. Each bed is rated at 600 lbs.

**Left:** Seating is abundant and they easily fold-up allowing up to 92" of storage space when on the road.



**treadlightly!**<sup>®</sup>  
OFFICIAL SPONSOR



Jayco proudly sponsors Tread Lightly!<sup>®</sup>, a nonprofit organization whose mission is to empower generations to enjoy the outdoors responsibly through education and restoration.



## CONSTRUCTION AND DESIGN



- 1** The radius-cornered ramp door has a weight capacity of 2500 lbs. and is designed for safety.
- 2** Durable non-slip flooring makes for worry-free trips up and down the ramp.
- 3** Roof rafters are constructed of strong, residential-style 4-1/2" trusses.

- 4** Fiberglass insulation in roof and sidewalls (R-7) helps keep the interior comfortable.
- 5** 3/16" plywood adds strength to the sidewalls and floor.
- 6** 3/8" plywood decking in roof construction
- 7** One-piece, seamless rubber roof shrugs off the hardest rains, reflects heat and reduces noise.

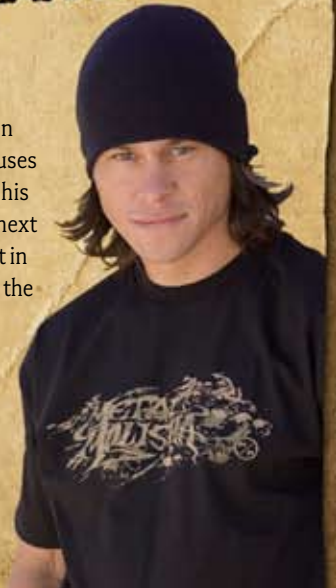
- 8** 2" laminate floor contains 3/8" seamless Structurwood® main floor decking and provides a firm foundation.
- 9** Fiberglass insulation in sidewall and roof construction (R-7)
- 10** Driveable wheel wells
- 11** We simplified the "ins and outs" with a double retractable main entrance steps.
- 12** .024" aluminum siding.
- 13** Octane includes several handy storage spaces including an easy access tool compartment located in the floor of the cargo bay.
- 14** It's easy to keep your toys securely stowed away with this cam-style ramp door latch with built-in lock.
- 15** Our tie-down D-rings are each rated for 2,500 pounds and keep your ATVs, motorcycles and other toys stationary during travel.
- 16** Extend your space with this optional screened in patio room.
- 17** The optional portable grill conveniently mounts to Octane's exterior, making grilling out a breeze.

## FLOORPLANS



## BRIAN DEEGAN AND JAYCO

As the originator of numerous motocross tricks and winner of ten X-Games medals, Brian Deegan uses only the best—Jayco ZX—to haul his family and his Honda 250 to his next event. Jayco wishes Brian the best in his efforts to continue radicalizing the sport of motocross freestyle and appreciates his endorsement of the Jayco ZX products.





## STANDARDS AND OPTIONS

### Customer Value Package

6 gal. gas/electric DSI water heater  
A/C Central (13,500 or 15,000 BTU)  
w/ wall thermostat  
Bathroom power vent  
Bathroom skylight  
Carefree® Travl'r 12 volt electric patio awning  
Convection microwave  
Kicker® Stereo System (4 speakers) w/ Apple® iPod®  
charger/adaptor, iPod® holder & Kenwood  
CD Receiver  
Large double door refrigerator  
Range cover  
Stabilizer jacks (4)  
Water purifier

### Standard Bathroom Equipment

ABS tub/shower surround  
Foot-flush toilet  
Medicine cabinet w/ mirror (n/a T21X)  
Round lavatory sink  
Rounded shower curtain w/ clear upper panel  
Toilet paper holder  
Towel holder

### Standard Bedroom Equipment (T24Z & T26Y)

A/C ducts in front bedroom  
Multiple Location Entertainment System (M.L.E.S.)  
TV location (T26Y)  
Pull curtain closure  
Quilted bed mat

### Standard Construction Features

102" wide body  
3/8" plywood decking on roof  
98" interior width  
Aerodynamic roof line  
Darco™ one-piece underfloor cover  
Double battery tray on A-frame  
Floor is unitized, 2" laminated  
floor construction  
One-piece, seamless, rubber roof  
R-7 insulation in roof and sidewalls  
Roof rafters, constructed of residential-style  
tapered 4 1/2" trusses  
Steel backers welded onto frame to mount D-rings  
Welded tubular-aluminum floor frame

### Standard Exterior Equipment

2000 lb. capacity tongue jack  
Cable TV hookup w/ RG6 coax cabling  
Door-side lights (2)  
Double, retractable entrance step  
Electric brakes  
Exterior Moto graphics  
E-Z Lube® axles  
High-intensity rear ramp lights (2)  
Leaf spring axles  
Lockable, radius-cornered baggage doors w/  
heavy-duty grab handle  
Marine grade exterior speakers (2)  
Molded ABS cover for propane bottle  
Patio lights (2) w/ inside switch  
Rain guttering, molded w/ drip spouts  
Roof rack and ladder  
Smooth aluminum mill-finished fender skirts  
Spare tire and carrier

### Standard Interior Equipment

20" LCD TV  
Crank up TV antenna w/ signal booster  
Fabric-covered box valances  
Flat panel cabinet doors in kitchen,  
bath & bedroom  
High-intensity 12V lighting package  
Linoleum flooring in kitchen, bedroom,

bathroom and cargo area  
Manchester Oak cabinetry  
Overhead cabinet for 20" TV  
Pedestal-legged table  
Pleated night shades  
Roll-over, fold-away sleeper/dinette  
and sleeper/sofa  
Satellite receiver/DVD player shelf

### Standard Kitchen Equipment

3-burner range w/ 9000 BTU SuperBurner™  
and piezo igniter  
Black range hood w/ light & fan (N/A T26Y)  
Cover for sink/cutting board (1)  
Deep residential-style sink  
Granite-look counter tops  
Mixing high-rise faucet

### Standard Power, Water and Heat

110V G.F.C.I. protected exterior receptacles (2)  
12V demand water pump  
12V electrical system w/ deluxe 120V  
45 amp power converter  
30-amp electric service  
Double 30 lb. propane bottles, w/ regulator  
Furnace w/ wall thermostat, auto-ignition  
Generator prep w/ 25 gallon gas tank  
Hook up for city water  
Monitor panel for all systems  
Outside shower  
Sewer hose storage compartment  
Water heater bypass system  
Water system winterization kit

### Standard Ramp & Cargo Equipment

15 degree beaver-tail transition ramp  
6'6" ramp, 2500 lb. capacity  
Anti-slip, non-skid flooring on ramp door  
Cam style latches and keyed locks on ramp door  
Heavy-duty 2500 lb. capacity D-rings  
anchored to frame  
Hinge spring assist, radius-cornered door  
Retractable electric beds  
Super-wide, lightweight ramp door  
opening at 95 5/8"  
Welded steel storage compartment  
in garage floor

### Standard Safety Equipment

Break-away switch  
Carbon monoxide alarm  
Fire extinguisher  
Lock and dead bolt on entrance door  
Propane alarm  
Smoke alarm  
Tinted safety glass windows

### Optional Equipment

4000 watt generator  
Customer Value Package  
Customer Value Package w/ 15,000 BTU A/C  
Electric queen bed w/ rollover sofa (n/a T21X)  
Free Standing Table w/ 2 Chairs ILO  
Dinette (n/a T29M)  
Fuel station  
Front queen bed ILO U-dinette (T29M)  
Kicker® subwoofer & amplifier upgrade  
Patio screen room and rear awning  
Portable, outside gas grill w/ carrying  
case (n/a T29M)  
Retractable screen wall  
Roll-up cargo carpet  
ToyLok, retractable security cable  
Transition ramps (2)  
Super U-Dinette (T24Z & T26Y)



1. Main 2. Upholstery 3. Bedspread 4. Drapery

## SPECIFICATIONS AND MEASUREMENTS

FLOORPLANS	T21X	T24Z	T26Y	T29M
EXTERIOR LENGTH	25'	28' 8"	30' 7"	33' 7"
EXTERIOR HEIGHT (W. A/C)	135"	135"	135"	146"
INTERIOR HEIGHT	87"	87"	87"	102"
UNLOADED VEHICLE WEIGHT	5,760	6,315	6,640	7,720
DRY HITCH WEIGHT (LBS)	780	905	995	1,130
GROSS VEHICLE WEIGHT RATING (LBS)	9,500	9,750	10,500	11,950
CARGO CARRYING CAPACITY	3,740	3,435	3,860	4,250
FRESH WATER (GAL.) INCLUDES WATER HEATER	112	112	112	112
GRAY WASTEWATER (GAL)	35	35	35	35
TOILET/BLACK WASTEWATER (GAL.)	48.5	48.5	35	35

It is important for your safety and enjoyment that your tow vehicle be adequately sized and equipped to tow and handle the GVWR of the RV you select. Review weights and rating of your tow vehicle and consult a competent advisor for questions or advice. Whether you are new to RVing or a veteran, get a feel for the performance of your tow vehicle and the RV together before heading out on the roadways. When you tow an RV, you must drive differently than you do when driving a single vehicle. Practice hooking up, driving, backing up and braking in a safe environment or seek out professional instruction. Jayco affixes a weight label to each RV which lists weight information for that vehicle. See specification chart above.

Unloaded Vehicle Weight (UVW)  
Sometimes referred to as "Dry Weight," UVW means the typical weight of this trailer as built at the factory. The UVW, as used in product literature and other promotional materials, does not include cargo, fresh water, propane, options or dealer-installed accessories.

Gross Vehicle Weight Rating (GVWR)  
GVWR means the maximum permissible weight of the trailer, including the UVW plus passengers, personal items, all cargo, fluids, options and dealer-installed accessories. The GVWR is equal to or greater than the sum of the UVW and the CCC.

Cargo Carrying Capacity (CCC)  
CCC means the maximum weight of all passengers, personal items, food, fresh water, propane, tools, other cargo and dealer-installed accessories that can be carried by the trailer. CCC is equal to or less than GVWR minus UVW. The addition of options will decrease the CCC.

Hitch Weight (HW)  
The hitch weight, as used in product literature and other promotional materials, does not include cargo, fresh water, propane gas, options or dealer-installed accessories. The addition of these types of items will either add to or subtract from the stated hitch weight.



## CUSTOMER FIRST ROADSIDE ASSISTANCE

Travel worry-free in your Octane ZX with Jayco's Customer First Roadside Assistance program, yours at no cost during your first year of ownership. This program is offered through Coach-Net®, the largest RV emergency road service in the country, and gives you immediate access to dependable roadside assistance and support services with a simple phone call.

### Emergency Roadside Assistance

- 24-hour toll-free emergency message service
- \$2,000 trip interruption reimbursement
- Toll-free nationwide service appointment assistance
- **Free** custom trip routing and full color map service
- **Free** dispatch of on-site mechanical service
- \$1,000 auto theft or hit-and-run reward
- **Free** jump starts
- **Free** tire changes
- **Free** fuel delivery
- **Free** lockout service
- **Free** travelers checks



## WE BACK WHAT WE BUILD

The Jayco Co-Pilot Warranty is a manufacturer's limited warranty. It comes from the people who build Jayco recreation vehicles to the people who buy them. Each Jayco is warranted to the original purchaser for twenty-four (24) months or twenty-four thousand (24,000) miles (mileage limitation applies to motorized products only), whichever occurs first, from the original date of purchase against defects in materials and workmanship. Jayco's limited warranty is not transferable. Go ahead and compare the Jayco warranty with other manufacturers' warranties. You'll find it's the best in the business!

For a copy of the limited warranty with full terms and conditions, ask your local Jayco dealer.

As a Jayco owner, you can be part of the Jayco Jafari International Travel Club. Ask your dealer about the Jafari "flight" in your area, write Jayco or visit our website.



Please Note: All information in this brochure is the latest available at the time of publication approval. Jayco reserves the right to make changes and to discontinue models without notice or obligation. Photos in this brochure may show optional equipment or props used for photography purposes. RVs built for sale in Canada may differ to conform to Canadian codes.

©2007 Jayco, Inc. 08-OCTN-PL 0108-50K Printed in U.S.A.



Your Jayco Dealer



AMERICA'S MOST LIVEABLE RVs.

Jayco, Inc., P.O. Box 460, Middlebury, IN 46540 [www.jayco.com](http://www.jayco.com)