

# PINNACLE



your **HIGH-CLASS** hide-away



Read more about our industry-leading **2-YEAR WARRANTY** on the back cover!



**Jayco**

Generations of family fun.





12 CU. FT. REFRIGERATOR

STANDARD  
FRAMELESS  
WINDOWS



SOLID-SURFACE COUNTERTOPS



## book the **LUXURY SUITE**

Your luxury package wouldn't be complete without a Culinary Dream Kitchen and a Tranquility Bedroom Suite. Welcome to the 2014 Jayco Pinnacle, the culmination of exclusive comfort and stunning design.







HIGH-RISE  
FAUCET

SLIDING TRASH  
RECEPTACLE

KEY FOB REMOTE FOR  
SLIDEOUTS, PATIO AWNING/  
LIGHT AND POWER JACKS



BACKLIT  
COMMAND  
CENTER





## demand attention **IN A PINNACLE**

Pinnacle is dressed to thrill. Boasting a front cap with LED lights, Gel-360 exterior shell and a Premium Paint option, Pinnacle stands apart from the crowd.



WALK-IN CLOSET



DENVER MATTRESS

## **THEN, DEMAND COMFORT**

Pinnacle's Tranquility Bedroom Suite comes complete with a cedar-lined walk-in closet, 72" x 80" king-sized Denver Mattress Advanced pillowtop mattress, full-width dresser drawers and private bathroom entrance.





ENTERTAINMENT CENTER AND FIREPLACE WITH 40" LED HDTV (60" IN 38FLFS)



PINNACLE 38FLFS | CARAMEL



PINNACLE 38FLFS | CARAMEL



PINNACLE 36REQS | PECAN



# 4-SEASON ENGINEERING

Extend your camping season with the Jayco Climate Shield — the ultimate in weather protection. Designed for efficient heating and cooling, Climate Shield protects against extreme heat and extreme freezing — even when temperatures hit a high of 100° F or a low of 0° F.

VALUE UNIT AREA		TYPE OF INSULATION
R-7	All vertical walls	Block foam
R-11	Behind front cap	R-11 insulation
R-30	Roof	R-18 insulation + R-14 foil
R-22	Main floor	R-7 insulation + R-14 foil
R-14	Slide floor	R-14 foil
R-22	Bedroom floor	R-7 insulation + R-14 foil
R-14	Inside open pin box	R-14 foil
R-14	Enclosed drop-frame overhang	R-14 foil



## WALL CONSTRUCTION

- 1 Vacuum-bonded layers
- 2 Gel-360 fiberglass exterior
- 3 Welded aluminum frames with metal backers
- 4 Eurostyle front and rear caps
- 5 Extra thick front cap fiberglass insulation

## FLOOR CONSTRUCTION

- 6 5/8" tongue-and-groove plywood deck on 2" x 3" wooden floor joists
- 7 Reflective foil insulation
- 8 Poly Flex covering and an enclosed, heated underbelly
- 9 Bedroom floor Flexfoil and fiberglass insulation

## MAGNUM TRUSS ROOF

- 10 3/8" plywood decking, screwed down at every seam
- 11 5" arched, stamped steel roof trusses
- 12 R-30 insulation package
- 13 Seamless weather barrier

\* Pinnacle was tested in 0° F and 100° F weather over an extended period of time in a controlled environment and all functions of the coach were fully operational. Testing cannot account for natural elements, such as wind or moisture. In actual use, unit may not perform as well. In addition, outside components are subject to freezing and require steps to properly insulate. Jayco's warranty does not cover damage caused by freezing.

## STANDARDS AND OPTIONS

### STANDARD EXTERIOR EQUIPMENT

TuffShell vacuum-bonded laminated walls
Stamped steel, Magnum Truss Roof System
Aerodynamic front and rear cap with LED lights
One-piece seamless roof covering
10" I-Class cambered structural steel I-beam frame
16" radial tires
Nev-R-Adjust brakes
E-Z Lube axles
MOR/ryde LRE4000 suspension system
Completely enclosed and protected slideout mechanisms
4-step entrance step
Frameless, dark-tinted safety-glass windows
30" x 72" entry door with oversized window
Exterior entertainment center with 32" LED TV (38FLFS)
Exterior marine-grade speakers (2)
Front awning arm convenience outlet
ExpansiView opera-style, floor-to-ceiling dining area windows
Enclosed, protected basement drop frame
Cable TV and outlet in basement
Dual battery compartment with disconnect
Wide-stance front landing gear
Stor-Galore pass-through basement storage with slam latches and strut assist
Sliding tray with 30-lb. propane bottles
Heated, enclosed Uni-Dock utility center
50-amp power service with detachable cord
35,000-BTU furnace (minimum)
75-gal. fresh water tank (minimum)
85-gal. gray tank capacity (minimum) (n/a 38FLFS)
50-gal. black tank capacity (minimum) (n/a 38FLFS)
Cable/satellite prep
Digital TV antenna
Outside grill prep
Electric rear stabilizer jacks
Under-mounted spare tire
Frame prepped for bike rack/cargo tray
Roof ladder

### STANDARD INTERIOR EQUIPMENT

Residential-grade hardwood cabinet doors with hidden hinges
Pull-out lower pantry and trash receptacle storage (where available)
Half-barrel hidden storage cabinet (where available)
Steel ball bearing drawer guides, 75-lb. capacity with full extension
Large split under-mounted Stonecast kitchen sink with covers
Residential-grade, pull-out kitchen faucet
Water heater bypass
12 cu. ft. refrigerator with raised-panel hardwood front
Flush mounted, oversized 21" oven with 3-burner cooktop and range cover
30" residential-grade microwave
Kitchen power vent
Diamondflor deluxe linoleum flooring
Toe-kick kitchen lighting
90-amp power center with Charge Wizard
Backlit Command Center for switches with 12V cell phone charger
Key fob remote for slideouts, awning, power jacks (n/a with levelers), patio light
Arched cathedral-style interior ceiling
Closeable and directional air conditioner vents
Prep for 2nd ducted air conditioner
Ceiling fan
Hardwood kitchen ceiling feature (where available)

LED ceiling lights throughout
6" 5" tall living area slideouts
Backlit slide fascias in living room and kitchen
Pleated day/night shades (main living area)
Denver Mattress tri-fold hide-a-bed sofa (n/a 38FLFS—air mattress)
Fiberglass shower with glass enclosure
Vessel bathroom sink with high-rise faucet
Porcelain bath stool with foot flush
Robe hooks in bath
30" deep bedroom slideouts
Hardwood headboard
Full-trunk, under-bed storage
Cordless Dyson vacuum
Walk-in style front closet with dual hanging rods and cedar lining
Mullion-style front wardrobe doors
Washer/dryer prep
Floor-to-ceiling bedroom dresser with 32" LED TV/DVD player and opera-style window

### CUSTOMER VALUE PACKAGE (MANDATORY)

Extendable main entrance grab handle
Large patio scare lights (2)
Electric patio awning with LED lighting
Bathroom power vent
15,000-BTU low-profile Whisper-Quiet air conditioner
Multi-Media Premium Sound System AM/FM/CD/DVD/MP3 player with toggle switch for outside speakers
Under-bed floor safe
Bath skylight
12-gal. quick-recovery gas/electric DSI water heater
Canister-style, in-line water purifier
Denver Mattress Advanced king size (72" x 80") pillowtop mattress

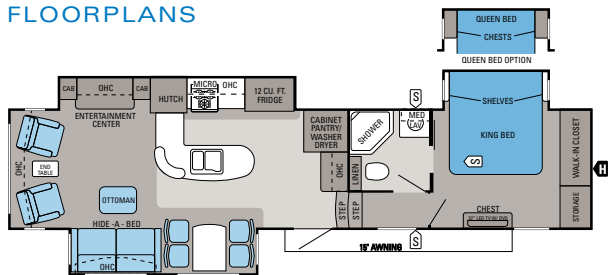
### SUMMIT PACKAGE (MANDATORY)

Aluminum rims
Champagne-colored, ultra high-gloss, gel-coated exterior shell, baggage and entry doors
Hardwood cabinetry and slide fascias
LG brand high-gloss solid-surface kitchen countertops
Craftsman-style, free-standing table and 4 chairs
40" LCD HDTV (60" in 38FLFS)
Rocker/glider recliner chairs (n/a 38FLFS)

### OPTIONS

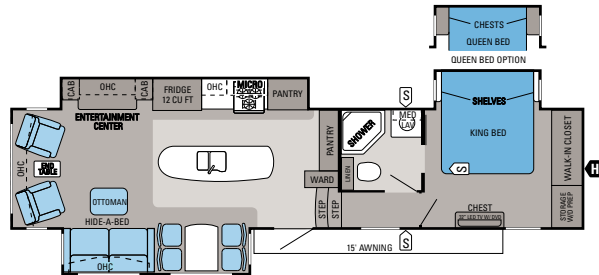
Customer Value Package with 15,000-BTU A/C and heat pump
Summit Package
Premium Paint Package
Slideout awnings
2nd patio awning (n/a 36RETS and 38FLFS)
4-point auto leveling jacks
MOR/ryde pin box
Generator prep
Power cord reel
5,500-watt gasoline generator with prep
Bike rack/cargo tray system
Outside grill
30" residential-grade convection microwave with oven
Ledgestone fireplace (36RETS, 36REQS) (standard in 38FLFS)
Electric fireplace (n/a 38FLFS)
Hardwood fireplace mantle surround
Queen-sized Denver Mattress Advanced pillowtop mattress with nightstands
2nd A/C in bedroom (13,500-BTU ducted)
Linoleum in living room (n/a 38FLFS)
Thermal pane tinted safety-glass windows

# FLOORPLANS



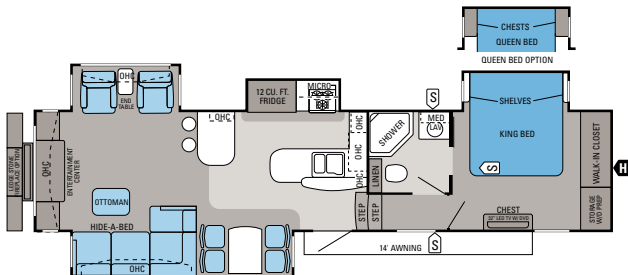
## Pinnacle | 35LKTS

Ext. Length: 40' 11" Ext. Height: 155" Unloaded Wt. (lbs.): 11,790 Sleeps: 4



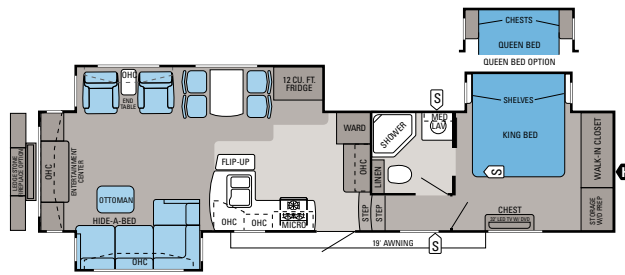
## Pinnacle | 36KPTS

Ext. Length: 40' 4" Ext. Height: 157" Unloaded Wt. (lbs.): 11,640 Sleeps: 4



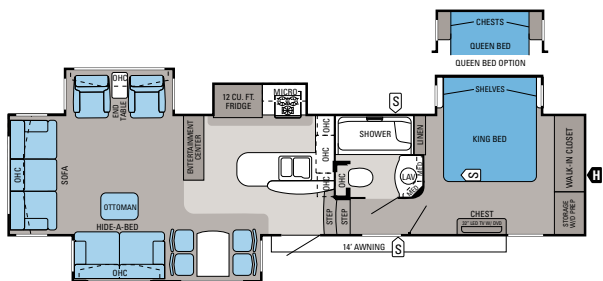
## Pinnacle | 36REQS

Ext. Length: 40' 6" Ext. Height: 155" Unloaded Wt. (lbs.): 12,010 Sleeps: 4



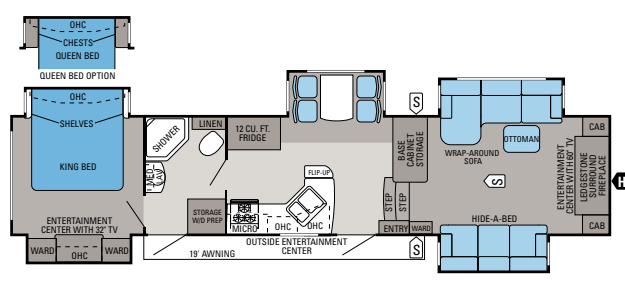
## Pinnacle | 36RETS

Ext. Length: 40' 5" Ext. Height: 156" Unloaded Wt. (lbs.): 11,820 Sleeps: 4



## Pinnacle | 36RSQS

Ext. Length: 40' 5" Ext. Height: 155" Unloaded Wt. (lbs.): 12,100 Sleeps: 4



## Pinnacle | 38FLFS

Ext. Length: 42' 6" Ext. Height: 159" Unloaded Wt. (lbs.): 12,300 Sleeps: 4

# SPECIFICATIONS

FLOORPLAN	EXT. LENGTH	EXT. WIDTH	EXT. HEIGHT (WITH A/C)	EXT. HEIGHT (WITH OPT. BEDROOM A/C)	INT. HEIGHT	UNLOADED VEHICLE WEIGHT (LBS.)	DRY HITCH WEIGHT (LBS.)	GROSS VEHICLE WEIGHT RATING (LBS.)	CARGO CARRYING CAPACITY (LBS.)	FRESH WATER CAPACITY (GAL.) (WITH WATER HEATER)	GRAY WASTEWATER CAPACITY (GAL.)	TOILET/BLACK WASTEWATER CAPACITY (GAL.)
35LKTS	40' 11"	96"	155"	157"	81"	11,790	2,600	15,950	4,160	87	87	50
36KPTS	40' 4"	96"	157"	157"	81"	11,640	2,415	15,950	4,310	87	87	50
36REQS	40' 6"	96"	155"	155"	81"	12,010	2,570	15,950	3,940	87	85	50
36RETS	40' 5"	96"	156"	156"	81"	11,820	2,390	15,950	4,130	87	85	50
36RSQS	40' 5"	96"	155"	155"	81"	12,100	2,646	15,950	3,850	87	85	50
38FLFS	42' 6"	96"	159"	159"	81"	12,300	2,495	15,950	3,650	87	72	37

The weights of certain options and/or option packages are not included in the UWW listed in the specification charts.

**Unloaded Vehicle Weight (UWW):** Sometimes referred to as "Dry Weight," UWW means the typical weight of this trailer as built at the factory. The UWW, as used in product literature and other promotional materials, does not include cargo, fresh water, propane, options or dealer-installed accessories.

**Gross Vehicle Weight Rating (GVWR):** GVWR means the maximum permissible weight of the trailer, including the UWW plus passengers, personal items, all cargo, fluids, options, and dealer-installed accessories. The GVWR is equal to or greater than the sum of the UWW and the CCC.

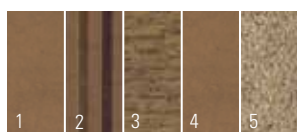
**Cargo Carrying Capacity (CCC):** CCC means the maximum weight of all passengers, personal items, food, fresh water, propane, tools, other cargo and dealer-installed accessories that can be carried by the trailer. CCC is equal to or less than GVWR minus UWW. The addition of options will decrease the CCC.

**Hitch Weight (HW):** The hitch weight, as used in product literature and other promotional materials, does not include cargo, fresh water, propane gas, options or dealer-installed accessories. The addition of these types of items will either add to or subtract from the stated hitch weight.

It is important for your safety and enjoyment that your tow vehicle be adequately sized and equipped to tow and handle the GVWR of the RV you select. Review weights and rating of your tow vehicle and consult a competent advisor for questions or advice. Whether you are new to RVing or a veteran, get a feel for the performance of your tow vehicle before heading out on the roadways. When you tow an RV, you must drive differently than when you drive a single vehicle. Practice hooking up, driving, backing up and braking in a safe environment or seek out professional instruction. Jayco affixes a weight label to each RV which lists weight information for that vehicle. See specifications chart above.

# INTERIOR DÉCOR CHOICES

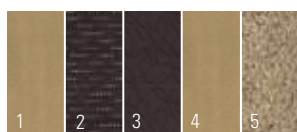
## CARAMEL



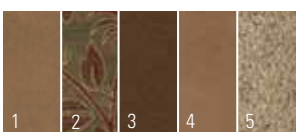
## PECAN



## PRALINE



## CABERNET



- 1 Sofa
- 2 Accent
- 3 Bedroom
- 4 Chair
- 5 Carpet

# EXTERIOR COLOR CHOICES



## STANDARD GRAPHICS

## PREMIUM PAINT OPTION

# 2-YEAR WARRANTY\*

Peace of mind comes standard



**Nobody offers a better warranty than Jayco.** With our exclusive 2-year CoPilot Limited Warranty, the only strings we attach are those that deliver the ultimate in reliability. At Jayco, your peace of mind is our priority, and that's the Jayco difference.

\*For a copy of our 2-year limited warranty with full terms and conditions, please contact your local Jayco dealer or visit [Jayco.com](http://Jayco.com).

## 300 JAYCO DEALERS

A four-decade strong network

From the sales experience to service after the sale, we consider our dealers to be an important part of the Jayco family. Establishing a solid relationship with your local Jayco dealer is a key component in the enjoyment of your new Jayco. By purchasing from a local dealer, you will have a convenient location for sales, parts and service support. We hope you consider them a part of your camping family.

Your local dealer

## 1-YEAR FREE

Roadside Assistance

Travel worry-free with Jayco's Customer First Roadside Assistance program, yours at no cost during your first year of ownership. This program is offered through Coach-Net, the country's largest RV emergency road service, and gives you immediate access to assistance.

**Coach-Net**  
RV Technical & Roadside Assistance



Generations of family fun.

**THE JAYCO STORY BEGAN IN 1968 WITH OUR FAMILY—THE BONTRAGERS.** Lloyd Bontrager created an innovative, easy-to-use lifter system that led to a better fold-down camper. Loaded with more conveniences, he believed his camper would bring families closer together.

Since then, Jayco has helped generation after generation create family stories — good, old-fashioned family fun built around campfires with a Jayco RV nearby. At Jayco, we strive to build family-friendly products that will outlast just about everything but your memories. We'd love nothing more than to be a part of your family story. Join us in our generations of family fun.

**eco** advantage™

Jayco's long-term commitment to protecting the environment



Scan this QR code with your smartphone to watch a video about our efforts and the impact we're making on our planet.  
[jayco.com/ecoadvantage](http://jayco.com/ecoadvantage)

Follow us on



Jayco, Inc., P.O. Box 460, Middlebury, IN 46540, [www.jayco.com](http://www.jayco.com) 

See dealer for further information and prices. All information in this brochure is the latest available at the time of publication approval. Jayco reserves the right to make changes and to discontinue models without notice or obligation. Photos in this brochure may show optional equipment and props for photography purposes. RVs built for sale in Canada may differ to conform to Canadian codes. ©2013 Jayco, Inc. 14-PNCL-PL 0913-75K Printed in U.S.A.