



Generations of family fun.



NEW SERIES

FOR 2015





Jayco Bungalow 40 BHTS

6 NEW FLOORPLANS designed for maximum exterior visibility — large windows and great campsite views.

All models incorporate Jayco's Smart Design with all appliances located away from potential customer-added decks and screen rooms.



FEATURED EXTERIOR EQUIPMENT

- 60" residential-style sliding patio door with Low-E thermal pane glass
- Atrium-style front wall with integrated lights
- 102" wide body construction
- Magnum Truss Roof System
- **NEW** 30 lb. propane bottles with new cover (CVP Package)

FEATURED INTERIOR EQUIPMENT

- **NEW** residential kitchen faucet with pull-out sprayer
- **NEW** DiamondFlor hardwood-look vinyl flooring
- Residential Shaw carpet with padding
- **NEW** wood-look miniblinds in living room
- **NEW** residential-style window treatments
- Hide-a-bed with tri-fold Denver Mattress
- Cable/satellite prep
- **NEW** dual USB charging port
- Porcelain stool with foot flush
- Bedroom stereo speakers (2)
- **NEW** outlets in master bedroom on each side of the bed
- **NEW** vented slide room end windows in living room and bedroom slides (most models)
- **NEW** 6-panel-style bathroom and master bedroom doors

- **NEW** residential-height master bed
- **NEW** 82" slide room
- **NEW** 84" tall interior doorways
- Interior LED lighting
- Recessed LED lights in kitchen area
- **NEW** living room throw pillows
- **NEW** upgraded reading lights in master bedroom
- **NEW** upgraded living room furniture style with all new decors
- **NEW** decorative dinette ceiling light
- **NEW** reeded-glass insert on select cabinets
- **NEW** crown molding on kitchen overhead cabinets
- **NEW** deluxe bar stools (select models)
- 30" microwave (CVP Package)
- **NEW** central vacuum with push-button retract for easy hose storage
- **NEW** AM/FM/CD/DVD player with MP3 input and Bluetooth connection

FEATURED OPTIONAL EQUIPMENT

- **NEW** adjustable-pitch electric patio awning with LED light
- **NEW** fiberglass sidewalls
- **NEW** solid-surface kitchen countertops
- King bed
- **NEW** stainless steel kitchen appliances



DiamondFlor hardwood-look vinyl flooring



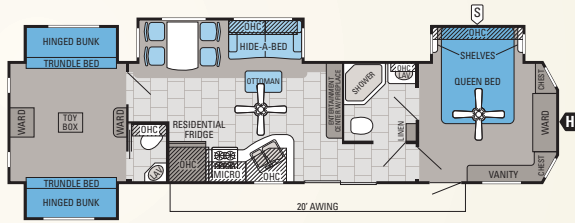
Interior LED lighting



Central vacuum with push-button retract for easy hose storage

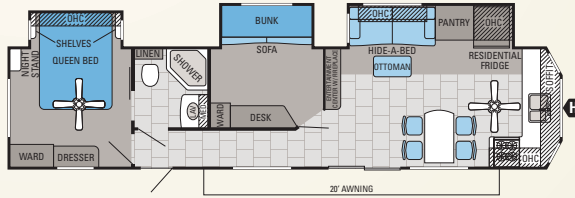


Reeded-glass insert on select cabinets



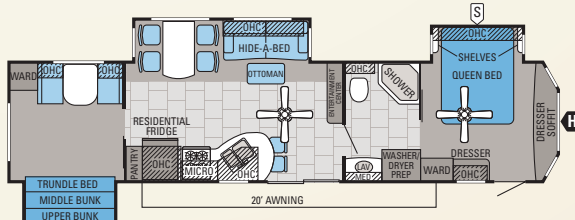
40BHQS | Options A, B, C, E

UVW: TBD | Hitch: TBD | GVWR: TBD | Exterior Length: 40' 8"



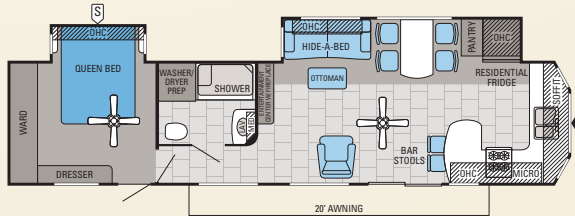
40BHQS | Options C, E

UVW: 10,375 | Hitch: 1,520 | GVWR: 12,500 | Exterior Length: 40' 11"



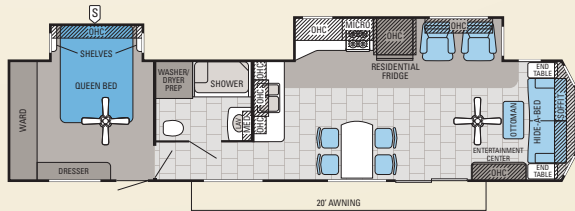
40DBTS | Options C, D, E

UVW: TBD | Hitch: TBD | GVWR: TBD | Exterior Length: 40' 11"



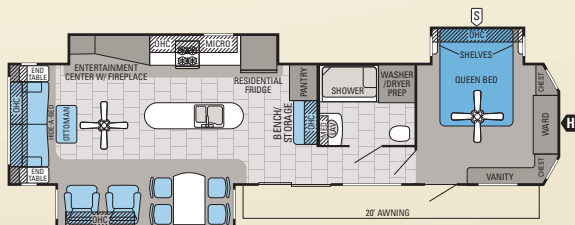
40FKDS | Options C, E

UVW: TBD | Hitch: TBD | GVWR: TBD | Exterior Length: 40' 11"



40FSDS | Options C, E

UVW: 9,990 | Hitch: 1,370 | GVWR: 12,500 | Exterior Length: 41' 11"



40RLTS | Options C, E

UVW: TBD | Hitch: TBD | GVWR: TBD | Exterior Length: 40' 8"

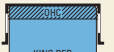
OPTIONS



DINETTE
Option A



SOFA
Option B



KING BED
Option C



QUEEN BED
Option D



THEATER SEATING
Option E



STANDARDS & OPTIONS

STANDARD EXTERIOR EQUIPMENT

- Deluxe graphics package
- 102" wide-body construction
- Magnum Truss Roof System with one-piece seamless DiFlex II material
- 5/8" tongue and groove plywood floor decking
- 12" I-Class cambered structural steel I-beams
- Two sided reflective foil in flush-floor slideout floors
- Electric powered slideouts with enclosed gear system
- Radial tires with galvanized steel impact resistant wheel wells
- E-Z lube axles
- 60" residential style sliding patio door with Low-E thermal pane glass
- Exterior marine grade speakers (2)
- Manual patio awning
- G20 dark tint windows
- Atrium-style front wall with integrated lights
- Utility lighting system
- Detachable hitch
- Outside shower
- Black tank flush sprayer

STANDARD INTERIOR EQUIPMENT

- 96" interior height
- 120V ceiling fan in living room and bedroom
- Screwed and glued Northridge Caramel cabinetry
- Ball bearing drawer guides, 75 lb. capacity, full extension
- 18 cu. ft. residential style 120V refrigerator with ice maker
- 20" free standing 4 burner gas range with oven
- Large 60/40 deep bowl acrylic kitchen sink
- Residential kitchen faucet with pull out sprayer
- 16-gallon effective (10-gallon tank) gas/electric DSI water heater

- 40,000 BTU auto ignition furnace
- DiamondFlor hardwood look vinyl flooring
- Residential Shaw carpet with padding
- Vertical patio door blinds
- Wood look mini blinds in living room
- Residential style window treatments
- Night shades in bedroom
- Hide-a-bed with tri-fold Denver Mattress
- Electric fireplace with thermostat controls
- Cable/satellite prep
- Hidden switch command/charging center
- Dual USB charging port
- Medicine cabinet with mirror
- Porcelain stool with foot flush
- Denver mattress pillowtop mattress
- Bedroom stereo speakers (2)
- 4" high density foam dinette cushions (40DBTS)
- Plywood bed, dinette and bunk bases with 300 lb. rated bunks and Denver Mattress mats
- Central vacuum with push button retract for easy hose storage
- Outlets in master bedroom on each side of the bed
- Vented slide room end windows in living room and bedroom slides (most models)
- 6-panel style bathroom and master bedroom doors
- Residential height master bed
- 82" slide room height
- 84" tall interior doorways
- Interior LED lighting
- Recessed LED lights in kitchen area
- Living room throw pillows
- Upgraded reading lights in master bedroom
- Upgraded living room furniture style with all new decors
- Decorative dinette ceiling light

- Reeded glass insert on select cabinets
- Crown molding on kitchen overhead cabinets
- Deluxe bar stools (select models)

CUSTOMER VALUE PACKAGE (MANDATORY)

- 15,000 BTU central A/C
- 30# LP bottles w/ cover (cover is new)
- Bath skylight
- CD/DVD w/ MP3 input and Bluetooth
- Manual stabilizer jacks
- 30" microwave
- Power vent in bathroom
- Quilted bedspread
- Sink cover (2)
- Tub surround
- Water heater bypass

OPTIONS

- Adjustable pitch electric patio awning with LED light
- Slideout awnings (2 — 4 by floorplan)
- Thermal pane tinted safety glass windows
- Fiberglass sidewalls
- King bed
- 2nd A/C in bedroom
- Thermal Package — insulated heated and enclosed underbelly and 2-sided reflective foil insulation in main roof and slideout floors
- Solid surface kitchen countertops
- Stainless steel kitchen appliances



Jayco's long-term commitment to generations of family fun

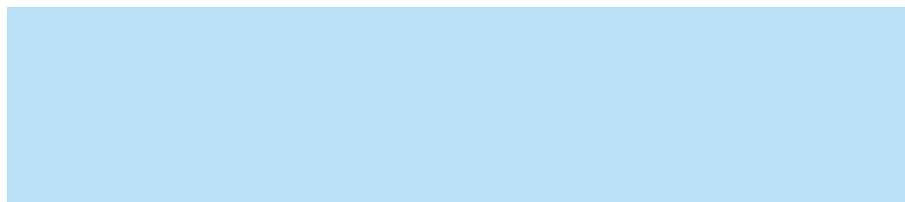


Scan this QR code with your smartphone to watch a video about our efforts and the impact we're making on our planet.

jayco.com/ecoadvantage

The fun starts with your local Jayco dealer

Your local dealer



From giving advice to selling and servicing products, we consider our loyal dealers the glue in our family bond. Establishing a solid relationship with your local Jayco dealer is a key component in the enjoyment of your new Jayco. By purchasing from a local dealer, you will have a convenient location for sales, parts and service support. We hope you consider them a part of your camping family.



Jayco, Inc., P.O. Box 460, Middlebury, IN 46540, www.jayco.com See dealer for further information and prices. All information in this flyer is the latest available at the time of publication approval. Jayco reserves the right to make changes and to discontinue models without notice or obligation. RVs built for sale in Canada may differ to conform to Canadian codes.

©2014 Jayco, Inc. Printed in U.S.A. 4-Page Flyer - New Jay Flight Bungalow.cdr JM 11-14