



2015 **SENECA**

CLASS C MOTORHOMES BY JAYCO



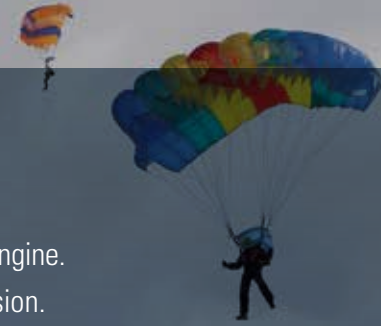
SENECA

THE POWER TO MOVE YOU



2
YEAR
WARRANTY

Read more about the only Class C **2-YEAR WARRANTY** on the back cover!

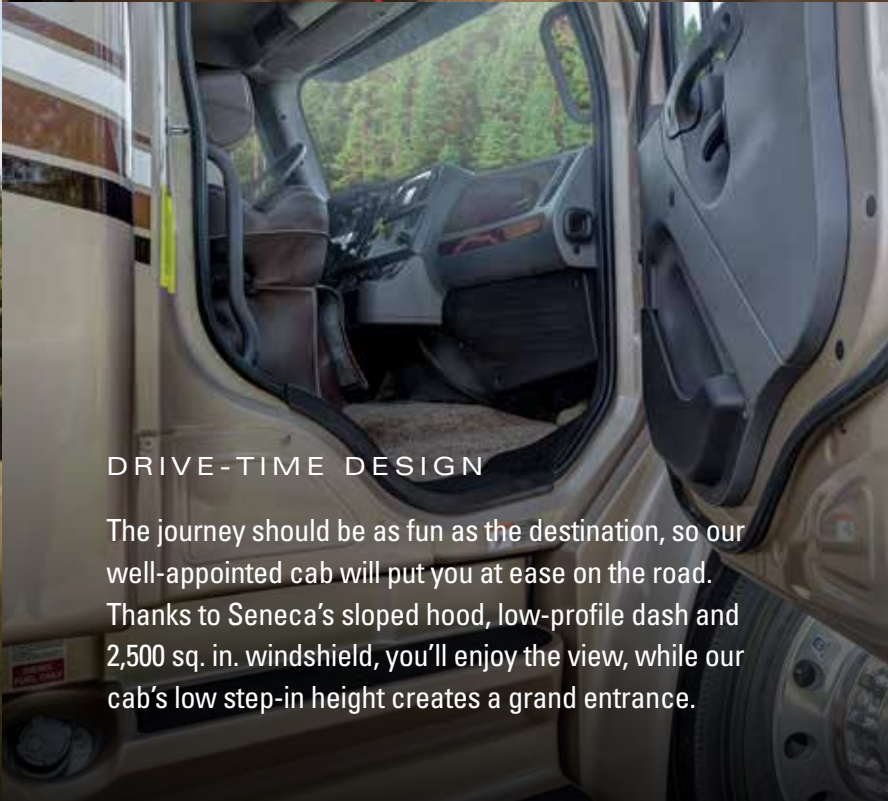


JET OFF ON NEW ADVENTURES

Meet the 2015 Jayco Seneca — the most affordable Class C to be built on a Freightliner M2 chassis with a Cummins ISB 6.7L 340 HP engine. Our uncompromising ride is engineered for the road with 700 lb-ft of torque, a 10,000-lb. rated hitch and heavy-duty rear air suspension. Inside, our well-appointed cabs and stunning interiors are designed with every luxury in mind.



YOUR WAIT FOR THE PERFECT RIDE IS OVER. Read more about Seneca's performance features on Page 6!



DRIVE-TIME DESIGN

The journey should be as fun as the destination, so our well-appointed cab will put you at ease on the road. Thanks to Seneca's sloped hood, low-profile dash and 2,500 sq. in. windshield, you'll enjoy the view, while our cab's low step-in height creates a grand entrance.

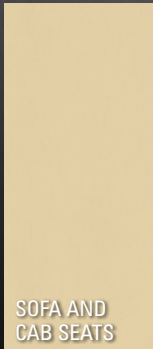




BENTLEY

SPICE

WATERFORD





High-end kitchens with one-piece, solid-surface countertops



Convection microwave oven (Customer Value Package)



Customer Value Package king-sized Denver Mattress



Bunk beds in the 37FS for a maximum 9-person sleeping capacity

JAYCO CONSTRUCTION

At Jayco, we've built a reputation for superior construction and craftsmanship. We always use top-quality materials and innovative manufacturing techniques — down to the smallest details. The result? Unmatched resale value and peace of mind in an RV that's built to handle whatever the road throws at it, while outlasting everything but your memories.



EXTERIOR PAINT CHOICES



SUNSET PREMIUM PAINT (STANDARD)



HOLLYWOOD PREMIUM PAINT (OPTIONAL)



TOPAZ PREMIUM PAINT (OPTIONAL)

WALL CONSTRUCTION

- 1 Vacuum bonded:** Features laminated layers of high-gloss fiberglass, luan, aluminum framing, R-8 bead-foam insulation and vinyl paneling
- 2 Seamless fiberglass front cap:** Increases aerodynamics, while cap adds durability and leak protection where it's needed most
- 3 Frameless windows:** An industry-first standard feature, creates a stunning exterior package

FLOOR CONSTRUCTION

- 4 Vacuum bonded:** Features laminated layers of Darco underbelly, 1/8" luan, a welded aluminum frame, R-9 bead-foam insulation and 5/8" Structurwood
- 5 Welded aluminum frame:** Lighter and more corrosion-resistant than competing steel floors, provides more cargo capacity
- 6 Aluminum wheel wells:** Not found on most other Class Cs, protects floor from tire blowouts and dissipates heat from brakes for a safe ride

ROOF CONSTRUCTION

- 7 Vacuum-bonded layers:** Features laminated layers of 5" arched aluminum trusses, moisture-resistant 1/4" plywood decking, R-24 bead-foam insulation and vinyl soft-touch ceiling
- 8 Seamless fiberglass roof:** Features one-piece construction for better leak protection; lightweight and UV resistant, fiberglass is superior to competing synthetic rubber roofs that require aftermarket kits to revitalize faded rubber

PERFORMANCE

- 9 Freightliner M2 106 chassis:** Delivers a surprisingly tight 55-degree turning radius
- 10 Cummins ISB 6.7L 340 HP diesel engine:** Features a 33,000-lb. GCWR with a 10,000-lb. rated hitch, plus gas-strut assisted hood for easy engine access
- 11 Heavy-duty rear air suspension:** Improves sway control under heavy loads
- 12 Front-axle stabilizer bar:** Not found on competing Class Cs, reduces sideways tilt when cornering

STANDARDS & OPTIONS

CUSTOMER VALUE PACKAGE

Touch-screen premium in-dash sound system
AM/FM/CD/DVD with back-up camera monitor and built-in GPS
Back-up/side-view cameras with monitor
Power leather driver/passenger seats
Frameless windows
15,000-BTU air conditioner with heat pump (2)
1,800-watt pure sine inverter
Electric power cord reel
12V electric awning with LED lights
12 cu. ft. refrigerator with ice maker
Convection microwave
Tankless water heater
Pillowtop Denver Mattress

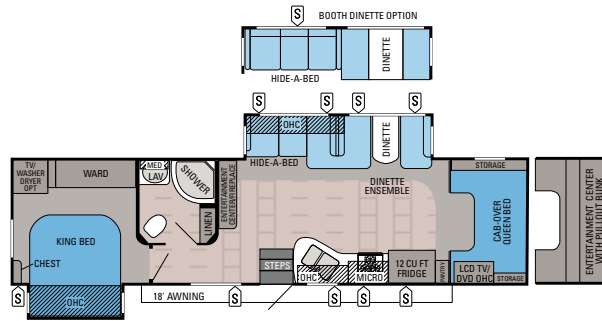
STANDARD EXTERIOR EQUIPMENT

High-gloss, gel-coat vacuum-bonded laminated sidewalls, crowned roof and floor
Deluxe full body paint with 3M paint protection
Sunset exterior paint
Bead-foam insulation (R-24 max roof, R-9 max floor and R-8 max walls)
One-piece fiberglass cap
Fiberglass, radius-cornered entrance door with screen door
Keyless entry, touchpad locking system
Electric-powered entrance step
Slideout awning toppers
Dual-pane, tinted, safety-glass windows
Exterior entertainment center with AM/FM/CD/DVD player and 32" TV and two (2) speakers
Onan 8,000-watt Quiet Diesel generator with auto-changeover
50-amp, quick-connect power cord
Slideout battery tray (4 batteries included)
56-lb. propane tank
Black holding tank sprayer
Outside shower
Hydraulic automatic leveling jacks
In-motion satellite dish
Roof ladder

STANDARD INTERIOR EQUIPMENT

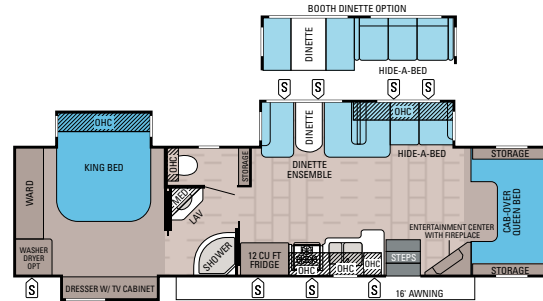
Padded vinyl ceiling throughout
Cherry-stained, solid-hardwood, raised-panel doors throughout
Ball bearing drawer guides
Deluxe hidden cabinet hinges
One-piece, solid-surface, high-gloss countertop with integrated deep bowls with decorative tile accented backsplash
Water filtration system

- Recessed 3-burner range with bi-fold recessed cover, 9,000-BTU SuperBurner and piezo igniter
- Dream Dinette mechanism, raises/lowers tabletop
- 2-point lap safety belts in living area
- Laminate tile flooring
- Systems monitor panel
- High-intensity recessed LED ceiling lights
- 12V electrical system with 120V, 80-amp power converter
- 34,000-BTU auto-ignition furnace with digital wall thermostat
- LED TV in main living area
- Cable TV hookup with RG-6 coax
- Residential medicine cabinet with mirror
- Porcelain stool with foot pedal
- Radius fiberglass shower with surround and glass shower door
- Skylight in shower with light
- King-sized bed
- Under-bed storage, bed lifts easily on gas struts (select models)
- 22" digital LED HDTV in bedroom
- Residential trackless carpeting with padding (bedroom)
- Full cab-over Denver Mattress bunk mat (750-lb. rating)
- Denver Mattress bunk mats (300-lb. rating) (37FS)



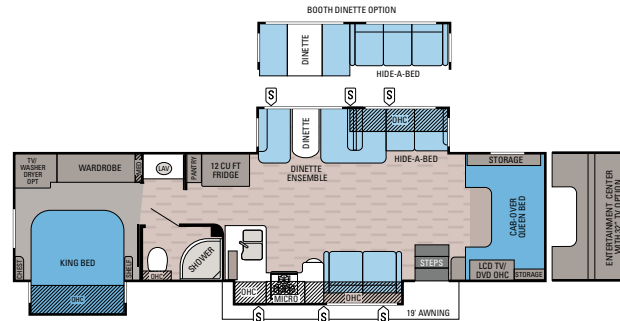
SENECA | 36FK

Exterior Length: **38' 6"** Exterior Height: **157"** Sleeps: **5-6**



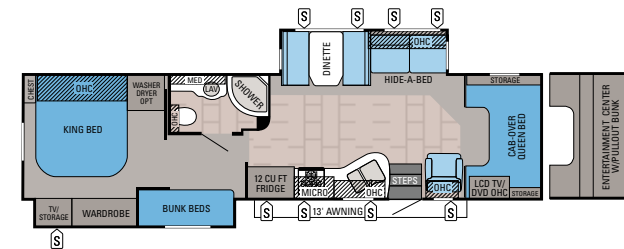
SENECA | 37HJ

Exterior Length: **38' 11"** Exterior Height: **157"** Sleeps: **5-6**



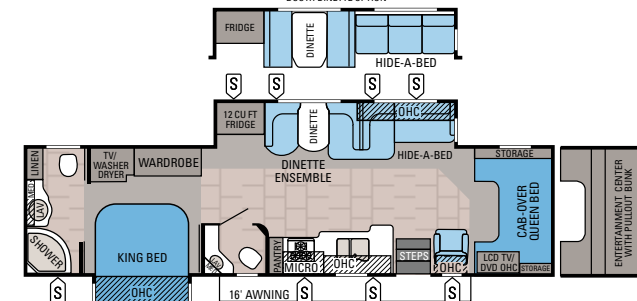
SENECA | 37TS

Exterior Length: **38' 10"** Exterior Height: **157"** Sleeps: **5-8**



SENECA | 37FS

Exterior Length: **38' 11"** Exterior Height: **157"** Sleeps: **7-9**



SENECA | 37RB

Exterior Length: **38' 6"** Exterior Height: **157"** Sleeps: **5-6**

STANDARD DRIVING EQUIPMENT

- Freightliner Business Class M2 chassis
- Cummins ISB 6.7L 340 HP diesel engine
- Allison 2500 MH automatic transmission
- Heavy-duty front stabilizer bar
- Heavy-duty rear air suspension
- 10,000-lb. hitch with 7-pin plug
- 74-gal. fuel tank
- Dual chassis batteries
- Alcoa aluminum rims
- Michelin 275/80R 22.5 tires
- Engine exhaust brake
- Power anti-lock brakes
- Deluxe wood dash
- Auxiliary start switch
- Tilt steering wheel with cruise control
- Deluxe heated, remote-control, side-view mirrors
- Power windows and door locks
- Privacy curtains for cab area

OPTIONS

- Hollywood exterior paint
- Topaz exterior paint
- Entertainment center with 40" LED TV
- Shaw Canadian satellite dish (DIRECTV)
- TRAV'LER satellite dish (DIRECTV)
- Hide-a-bed/booth dinette
- Washer/dryer combo (36FK, 37RB and 37TS)
- Washer/dryer stackable (37FS and 37HJ)

Gross Vehicle Weight Rating (GVWR): The maximum permissible weight of the motorhome, including the Unloaded Vehicle Weight (UVW) plus passengers, personal items, all cargo, fluids, options and dealer-installed accessories. The GVWR is equal to or greater than the sum of the UVW and the Cargo Carrying Capacity.

Gross Combined Weight Rating (GCWR): The maximum allowable combined weight of the motorhome used as a tow vehicle and the attached towed vehicle.

It is important for your safety and enjoyment that you are aware of the weights and tow ratings of the RV you select. Consult a competent advisor for questions or advice. Whether you are new to RVing or a veteran, get a feel for the performance of your RV before heading out on the roadways. When you tow a vehicle with your RV, you must drive differently than when you drive a single vehicle. Practice hooking up, driving, backing up and braking in a safe environment or seek out professional instruction. Jayco affixes a weight label to each RV which lists weight information for that vehicle. Refer to that label to verify the vehicle will meet your requirements. See specifications chart below.

SPECIFICATIONS

MODELS	DIMENSIONS				WEIGHTS (LBS.)		DRIVING FEATURES		FURNACE		TANKS (GALS.)		
	FLOORPLAN	EXTERIOR LENGTH	EXTERIOR WIDTH	EXT. HEIGHT (WITH A/C)	INTERIOR HEIGHT	GROSS VEHICLE WEIGHT RATING	GROSS COMBINED WEIGHT RATING	ENGINE/SIZE	WHEEL BASE	AUTO-IGNITION (BTUS)	FRESH	GRAY	BLACK
36FK		38' 6"	102"	157"	83"	28,000	33,000	6.7L CUMMINS ISB-340	269"	35M	71.5	40	50
37FS		38' 11"	102"	157"	83"	28,000	33,000	6.7L CUMMINS ISB-340	275"	35M	71.5	40	50.5
37HJ		38' 11"	102"	157"	83"	28,000	33,000	6.7L CUMMINS ISB-340	276"	35M	71.5	40	30
37RB		38' 6"	102"	157"	83"	28,000	33,000	6.7L CUMMINS ISB-340	271"	35M	71.5	90.5	65
37TS		38' 10"	102"	157"	83"	28,000	33,000	6.7L CUMMINS ISB-340	275"	35M	71.5	40	50

NOBODY OFFERS A BETTER WARRANTY

2
YEAR
WARRANTY



Your quality time starts with peace of mind.

For 45 years, Jayco has helped generation after generation create family memories—good, old-fashioned family fun built around a campfire with a Jayco RV nearby. In all of that time, we learned something important—quality time starts with peace of mind, which is why Jayco offers the only 2-year limited warranty in Class C motorhomes.*

Nobody offers a better warranty than Jayco.

*For a copy of our limited warranty with full terms and conditions, please contact your Jayco dealer.



Generations of family fun.

YOUR LOCAL DEALER

300 JAYCO DEALERS

The fun starts with your local dealer

From the sales experience to service after the sale, we consider our dealers to be an important part of the Jayco family. Establishing a solid relationship with your local Jayco dealer is a key component in the enjoyment of your new Jayco. By purchasing from a local dealer, you will have a convenient location for sales, parts and service support. We hope you consider them a part of your camping family.

1-YEAR FREE Roadside Assistance

Travel worry-free with Jayco's Customer First Roadside Assistance program, yours at no cost during the first year of ownership. This program is offered through Coach-Net, the country's largest RV emergency road service, and gives you immediate access to assistance.

Jayco, Inc., P.O. Box 460, Middlebury, IN 46540

See dealer for further information and prices. All information in this brochure is the latest available at the time of publication approval. Jayco reserves the right to make changes and to discontinue models without notice or obligation. Photos in this brochure may show optional equipment and props for photography purposes. RVs built for sale in Canada may differ to conform to Canadian codes. ©2015 Jayco, Inc. 15-SNCA-PL 0115-10K Printed in U.S.A.



www.jayco.com