



Generations of family fun.



2016

UNWIND ON YOUR TERMS  
#LETSJAYCO

2016 NORTH POINT LUXURY FIFTH WHEEL



**2**  
YEAR  
WARRANTY





# #LETSJAYCO

When you travel with Jayco, fun is the only thing on the agenda. That's because we go the extra mile so you can live in the moment. From comfortable, amenity-packed floorplans to weather-shielding insulation and superior frame construction, you'll have everything you need to adventure every day and make yourself at home every night. Let's get away. Let's make it count. Let's Jayco—and make memories that last a lifetime.

## GENERATIONS OF FAMILY FUN



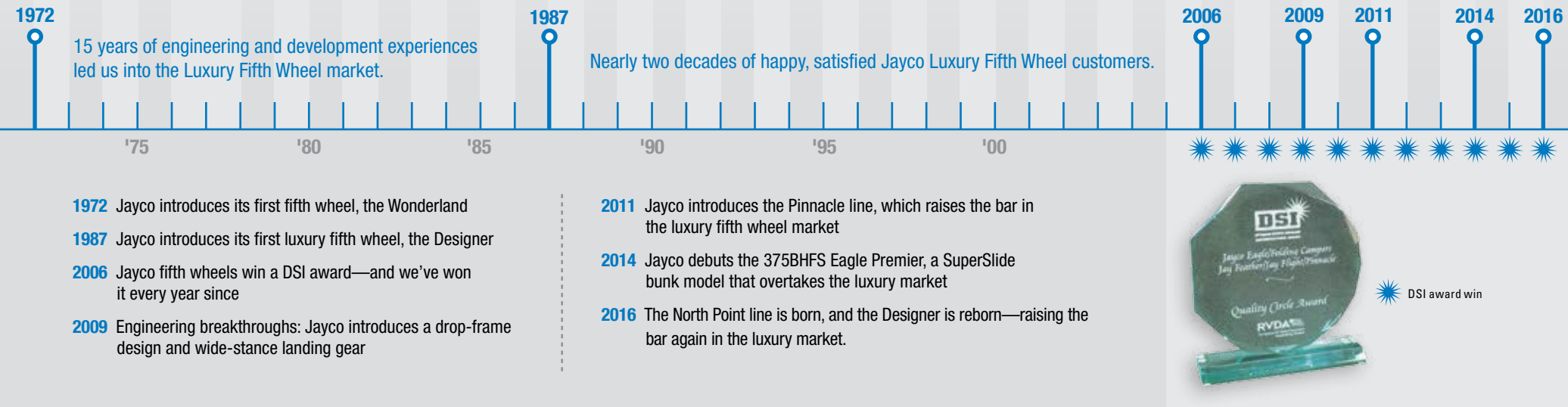
# NORTH POINT

## LIVE THE LEGACY

When Jayco founder Lloyd Bontrager set out to build a better camping trailer nearly 50 years ago, he probably couldn't have imagined the lavish craftsmanship, awe-inspiring floorplans and stunning residential amenities we'd accomplish years later. Today, his legacy of excellence lives on—with Luxury Fifth Wheels that are as plush as they come.

### MORE THAN 40 YEARS OF ENGINEERING, LISTENING, LEARNING AND EVOLVING

Jayco has been building fifth wheels for nearly a half-century—and Luxury Fifth Wheels for almost 30 years.

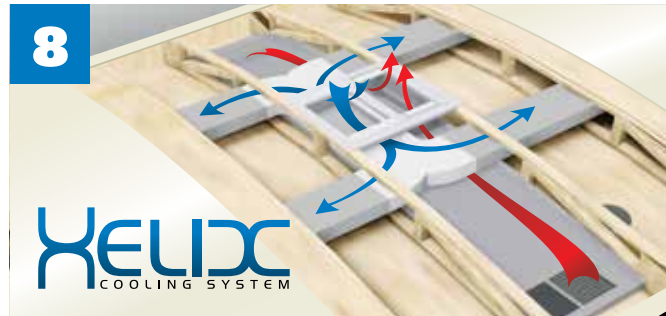
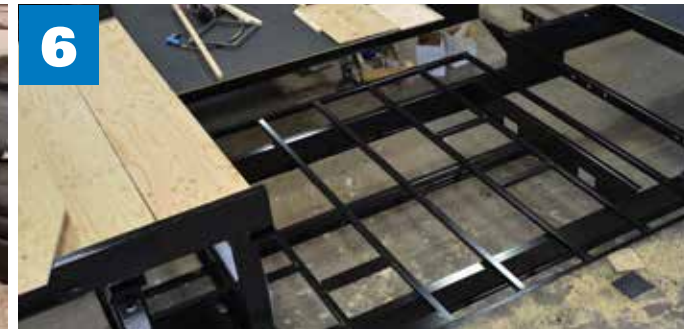


SHARE YOUR PHOTOS AND STORIES ON SOCIAL MEDIA WITH [#LETSJAYCO](https://www.instagram.com/letsjayco).





## LUXURY FIFTH WHEEL PACKAGE



### Indulge and Impress

Premium features come standard, thanks to our Luxury Fifth Wheel and North Point Advantage packages. They're the apex of towable comfort—where opulence meets unbeatable value. Now that's an indulgence you can feel good about.

### LUXURY FIFTH WHEEL PACKAGE:

- 6-point electric auto-leveling system (1)
- Backup camera prep; camera and monitor optional (2)
- Carefree® power awning with Flex Guard fabric shield (3)
- Indoor/outdoor central vacuum system with kick pan (4)
- Franklin™ American-made residential furniture (5)
- Magnum Frame System (6)
- Magnum Truss™ XL6 roof system (7)
- Helix Cooling System with Whisper Quiet technology (8)
- Quad-tread aluminum entrance steps (9)

- Bluetooth®/HDMI® high-output entertainment system
- Cargo accessory receiver
- Electric thermostatically controlled fireplace
- Keyless main entrance door
- LED exterior lighting
- MOR/ryde® pin box
- Oversized battery compartment
- Painted gelcoat fiberglass front cap
- Power kitchen vent with wall controls
- Sidewall and roof-mount solar prep
- Whole coach water purification system

# NORTH POINT ADVANTAGE PACKAGE



1



2



3



4



5



6

## NORTH POINT ADVANTAGE PACKAGE:

- Big-screen LED HDTVs in living areas (1)
- High-gloss, hand-rubbed hardwood cabinet doors (2)
- MOR/ryde CRE3000™ rubberized suspension system (3)
- Single blackout roller shades throughout (4)
- Remote control system for levelers, awnings, sliderooms and exterior lights (5)
- Fiberglass shower with glass enclosure (6)
- 32-inch LED HDTV in bedroom with integrated DVD player
- High-gloss premium fiberglass exterior
- 80-inch Jayco Luxury Sleep System with memory-foam mattress





375BHFS OUTSIDE KITCHEN



377RLBH BUNK ROOM DESK



375BHFS BUNK AREA

# NORTH POINT

## STEP UP YOUR GETAWAY

Impressive upgrades—from walk-in closets to chef-inspired dream kitchens—come standard on the North Point.


 A side view of the North Point RV, showing its white exterior with dark graphics and the brand name 'NORTH POINT' on the side.


377RLBH BEDROOM



377RLBH FIREPLACE



377RLBH KITCHEN





375BHFS INTERIOR



377RLBH HIDE-A-BED SOFA CLOSED

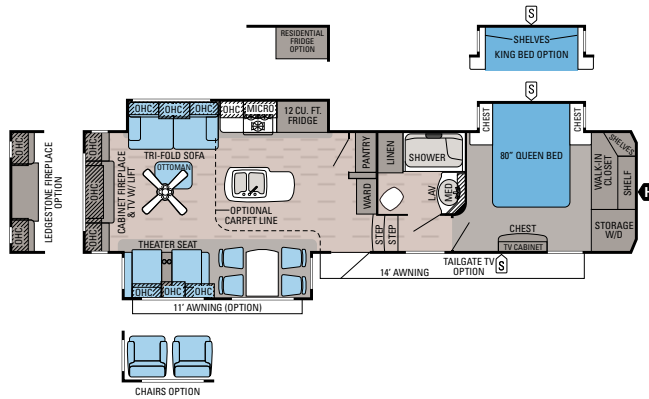


377RLBH HIDE-A-BED SOFA OPEN



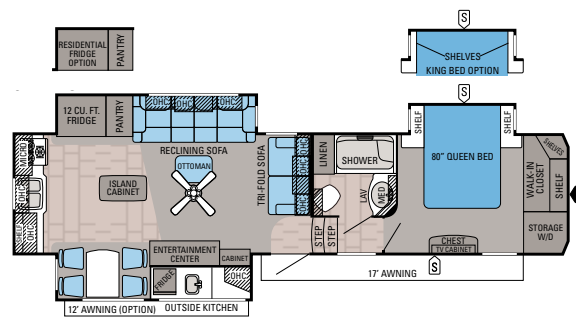
377RLBH INTERIOR

# NORTH POINT FLOORPLANS



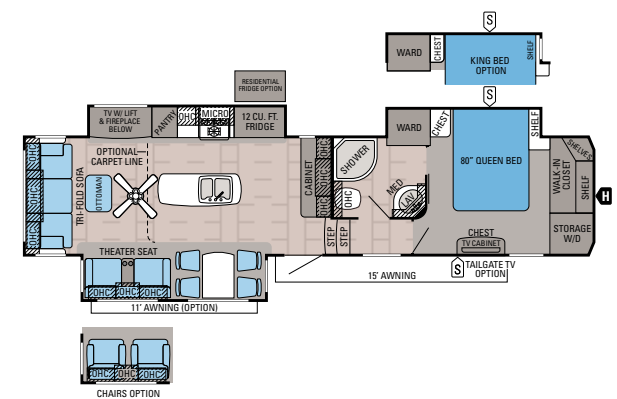
## NORTH POINT | 301RETS

Ext. Length: **38' 2"** Ext. Height: **159"**  
 Unloaded Weight (lbs.): **11,650** Sleeps: **3-4**



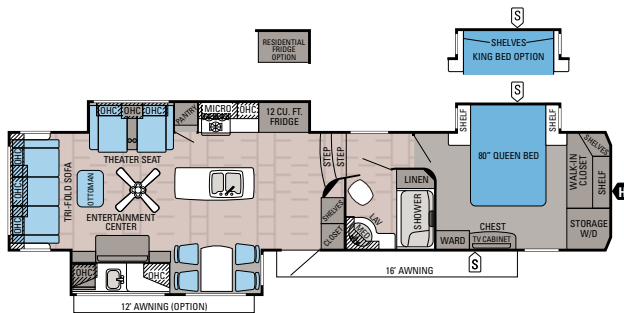
## NORTH POINT | 311RKTS

Ext. Length: **38' 4"** Ext. Height: **159"**  
 Unloaded Weight (lbs.): **12,085** Sleeps: **3-4**



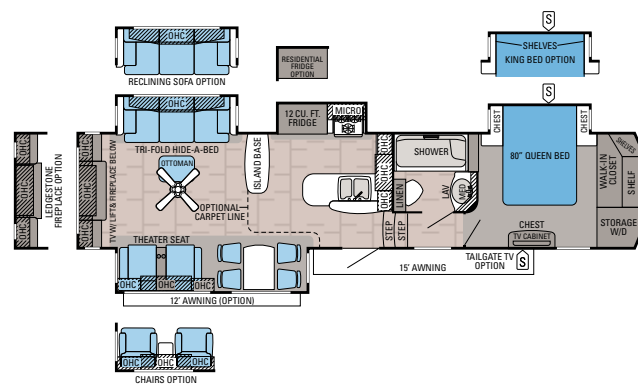
## NORTH POINT | 341RLTS

Ext. Length: **39' 11"** Ext. Height: **159"**  
 Unloaded Weight (lbs.): **12,125** Sleeps: **3-4**



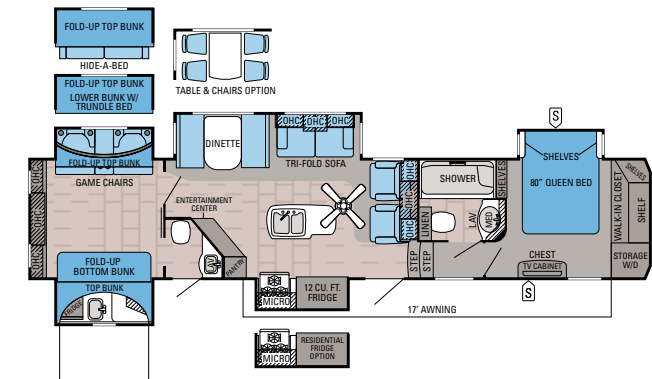
## NORTH POINT | 351RSTS

Ext. Length: **40' 3"** Ext. Height: **159"**  
 Unloaded Weight (lbs.): **12,445** Sleeps: **2-3**



## NORTH POINT | 361REQS

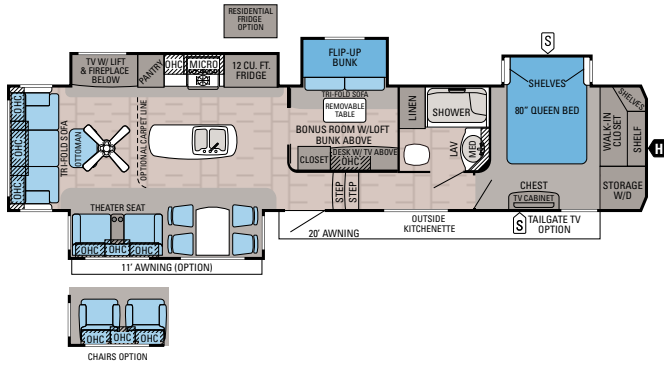
Ext. Length: **40' 7"** Ext. Height: **159"**  
 Unloaded Weight (lbs.): **12,080** Sleeps: **3-4**



## NORTH POINT | 375BHFS

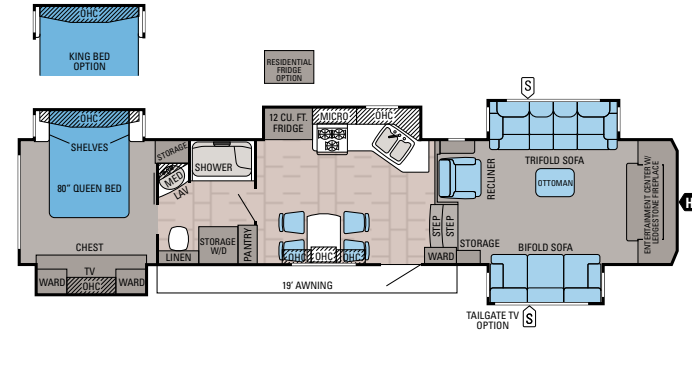
Ext. Length: **43' 3"** Ext. Height: **160"**  
 Unloaded Weight (lbs.): **13,570** Sleeps: **6-10**





**NORTH POINT | 377RLBH**

Ext. Length: 42' 7" Ext. Height: 158" Unloaded Weight (lbs.): 13,075 Sleeps: 6-10

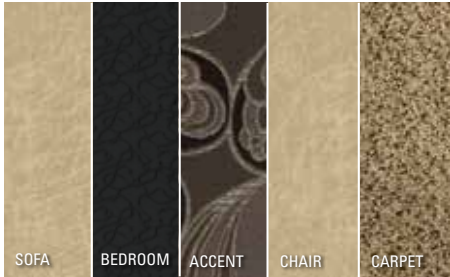


**NORTH POINT | 383FLFS**

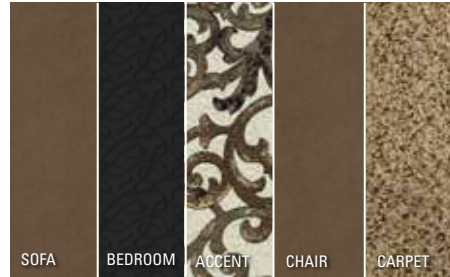
Ext. Length: 43' 7" Ext. Height: 160" Unloaded Weight (lbs.): 12,840 Sleeps: 2-4

**INTERIOR DÉCOR**

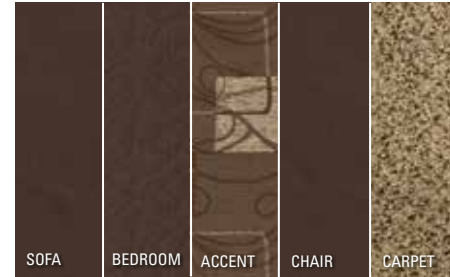
**COTTONWOOD**



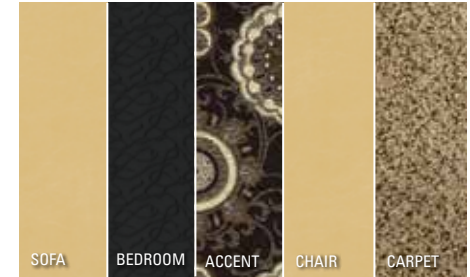
**HICKORY**



**MAHOGANY**



**WILLOW**



**NORTH POINT SPECIFICATIONS**

MODELS	DIMENSIONS					WEIGHTS (LBS.)			TANKS (GALS.)				
	FLOORPLAN	TOTAL EXTERIOR LENGTH	EXTERIOR TRAVEL LENGTH*	EXTERIOR WIDTH	EXTERIOR HEIGHT (WITH A/C)	EXTERIOR HEIGHT (WITH OPTIONAL BEDROOM A/C)	INTERIOR HEIGHT (BEDROOM)	UNLOADED VEHICLE WEIGHT	DRY HITCH WEIGHT	GROSS VEHICLE WEIGHT RATING	CARGO CARRYING CAPACITY	FRESH WATER CAPACITY (INCLUDES WATER HEATER)	GREY WASTE WATER CAPACITY
301RETS	38' 2"	36' 8"	96"	159"	160"	83"	11,650	2,455	14,900	3,250	85	87	50
311RKTS	38' 4"	36' 11"	96"	159"	159"	83"	12,085	2,125	14,995	2,910	85	95	50
341RLTS	39' 11"	38' 5"	96"	159"	159"	82"	12,125	2,460	14,995	2,870	85	87	50
351RSTS	40' 3"	40' 9"	96"	159"	159"	82"	12,445	2,595	15,500	3,055	85	95	50
361REQS	40' 7"	39' 1"	96"	159"	160"	82"	12,080	2,660	14,995	2,915	85	85	50
375BHFS	43' 3"	41' 10"	96"	160"	160"	82"	13,570	2,640	15,975	2,405	85	93	94
377RLBH	42' 7"	41' 1"	96"	158"	160"	82"	13,075	2,915	15,975	2,900	85	85	50
383FLFS	43' 7"	42' 1"	96"	160"	160"	82"	12,840	2,735	15,975	3,135	85	70	44

\*Distance from the pin box to the bumper; total exterior length may be longer.

It is important for your safety and enjoyment that your tow vehicle be adequately sized and equipped to tow and handle the GVWR of the RV you select. Review weights and rating of your tow vehicle and consult a competent advisor for questions or advice. Whether you are new to RVing or a veteran, get a feel for the performance of your tow vehicle before heading out on the roadways. When you tow an RV, you must drive differently than when you drive a single vehicle. Practice hooking up, driving, backing up and braking in a safe environment or seek out professional instruction. Jayco affixes a weight label to each RV which lists weight information for that vehicle. See specifications chart above.

**Unloaded Vehicle Weight (UUV):** Sometimes referred to as "Dry Weight," UUV means the typical weight of this trailer as built at the factory. The UUV, as used in product literature and other promotional materials, does not include cargo, fresh water, propane, options or dealer-installed accessories.

**Gross Vehicle Weight Rating (GVWR):** GVWR means the maximum permissible weight of the trailer, including the UUV plus passengers, personal items, all cargo, fluids, options, and dealer-installed accessories. The GVWR is equal to or greater than the sum of the UUV and the CCC.

**Cargo Carrying Capacity (CCC):** CCC means the maximum weight of all passengers, personal items, food, fresh water, propane, tools, other cargo and dealer-installed accessories that can be carried by the trailer. CCC is equal to or less than GVWR minus UUV. The addition of options will decrease the CCC.

**Hitch Weight (HW):** The hitch weight, as used in product literature and other promotional materials, does not include cargo, fresh water, propane gas, options or dealer-installed accessories. The addition of these types of items will either add to or subtract from the stated hitch weight.

# STANDARDS AND OPTIONS

## LUXURY FIFTH WHEEL PACKAGE

6-point electric auto-leveling system  
 Backup camera/monitoring system prep  
 Carefree power awning with Flex Guard fabric shield and LED light strip  
 Indoor/outdoor central vacuum system with kick pan  
 Franklin American-made residential furniture  
 Magnum Frame System  
 Magnum Truss XL6 roof system  
 Helix Cooling System with Whisper Quiet technology  
 Quad-tread aluminum entrance steps  
 Bluetooth/HDMI high-output entertainment system  
 Cargo accessory receiver  
 Electric thermostatically controlled fireplace  
 Keyless main entrance door  
 LED exterior lighting  
 MOR/ryde pin box  
 Oversized battery compartment  
 Painted gelcoat fiberglass front cap  
 Power kitchen vent with wall controls  
 Sidewall and roof-mount solar prep  
 Whole coach water purification system

## NORTH POINT ADVANTAGE PACKAGE

Big-screen LED HDTVs in living areas  
 32-inch LED HDTV in bedroom with integrated DVD player  
 High-gloss, hand-rubbed hardwood cabinet doors  
 High-gloss premium fiberglass exterior  
 MOR/ryde CRE3000 rubberized suspension system  
 Single blackout roller shades throughout  
 Remote control system for levelers, awnings, sliderooms and exterior lights  
 80-inch Jayco Luxury Sleep System with memory-foam mattress  
 Fiberglass shower with glass enclosure

## CUSTOMER VALUE PACKAGE

15,000-BTU central A/C  
 20-gallon refresh rate gas/electric auto-ignition  
 Atwood water heater  
 Arched interior ceiling  
 Bath skylight  
 Bathroom power vent  
 Bedspread  
 Under-bed floor safe  
 Oversized folding exterior grab handle  
 Frameless G20 dark-tinted windows  
 LED interior lighting  
 Solid-surface kitchen countertops  
 Security lights  
 Slam-latch™ baggage doors  
 Sofa and bed pillows

## STANDARD EXTERIOR EQUIPMENT

TuffShell™ vacuum-bonded, laminated walls  
 Aerodynamic front cap with LED lighting  
 Seamless roof covering  
 Climate Shield™:  
 • Enclosed, insulated, heated underbelly  
 • High-BTU-output furnace  
 • Astro-Foil™ in roof and floors  
 10-inch I-class cambered structural steel I-beams  
 Completely enclosed and protected slideout mechanisms  
 30-inch x 72-inch entry door with oversized window  
 Front awning arm convenience outlet  
 16-inch radial tires  
 7,000-pound axles  
 Wide-stance front landing gear  
 Exterior kitchen with 32-inch LED TV, sink, refrigerator and cooktop range (311RKTS, 351RSTS, 375BHFS)  
 Exterior kitchenette with refrigerator and cooktop range (377RLBH)  
 Enclosed, protected basement drop-frame  
 Stor-Galore™ pass-through basement storage with Slam-latch and strut assist  
 Cable TV and outlet in basement  
 Exterior marine-grade speakers (2)  
 Convenient dual LP compartment (60 pounds total) on off-door side

Door-side compartment prepped for third 30-pound LP bottle  
 Heated, enclosed Uni-Dock™ utility center  
 50-amp power service with detachable cord  
 35,000-BTU furnace (minimum)  
 75-gallon fresh water tank  
 70-gallon grey tank capacity (minimum)  
 44-gallon black tank capacity (minimum)  
 Cable/satellite prep  
 Digital TV antenna  
 Under-mounted spare tire  
 Outside grill prep  
 Roof ladder  
 Hitch light  
 Upperdeck slideout convenience light  
 EZ-Stow™ – cargo area sliding tray  
 EZ-Cord™ – cargo area extension cord access port

## STANDARD INTERIOR EQUIPMENT

Raised-panel cabinetry with screwed construction and hidden hinges  
 Steel ball-bearing drawer guides, 75-pound capacity, full extension  
 Hardwood slideout fascias  
 Large, split, under-mount stainless steel sink with sink covers  
 Pull-out kitchen faucet with sprayer  
 Water heater bypass  
 12-cubic-foot Norcold® gas/electric refrigerator  
 Recessed, flush-mount, oversized, 21-inch oven with 3-burner cooktop and range cover  
 Stainless steel, 30-inch, residential, over-the-range microwave  
 USB charging centers in living areas, kitchen and bedrooms  
 Residential-grade wood plank vinyl flooring  
 Shaw® R2X stain-resistant residential carpeting  
 Free-standing table and 4 chairs (optional 375BHFS)  
 90-amp power center with Charge Wizard®  
 Backlit command center for switches  
 Floor-level convenience light switch for safe entry  
 Ceiling fan (n/a on 383FLFS)  
 Ceiling mantle  
 Closeable and directional A/C vents  
 Prep for second A/C – prewired and tied into ducting  
 Tri-fold hide-a-bed sofas with ottoman (bi-fold in 375BHFS)  
 Reclining theater seat sofas (n/a on 375BHFS)

2 recliners (375BHFS)  
 6-foot-2-inch-tall living area slideouts  
 One-piece, fiberglass shower with glass doors (select models)  
 Porcelain bath stool with foot flush  
 Robe hooks in bath  
 Full-trunk, under-bed storage  
 Walk-in-style front closet with dual hanging rods  
 Washer/dryer prep (accommodates stackable unit)  
 Oversized bedroom dresser storage  
 Bedroom slide fascia built-in night stand storage system (n/a on 383FLFS)

## OPTIONS

Customer Value Package with heat pump  
 King bed (n/a on 375BHFS, 377RLBH)  
 Bunk beds with trundle bed in off-door bunk room slide (375BHFS)  
 Bunk beds with hide-a-bed in off-door bunk room slide (375BHFS; standard on 377RLBH)  
 2 recliner rockers in lieu of theater seating (301RETS, 341RLTS, 361REQS, 377RLBH)  
 Ledgestone fireplace surround (301RETS, 361REQS; standard on 351RSTS, 383FLFS)  
 Stainless steel convection microwave with oven  
 Carpet in living area (n/a on 383FLFS, 375BHFS)  
 Free-standing table and 4 chairs (375BHFS)  
 Reclining main sofa (301RETS, 341RLTS, 351RSTS, 361REQS, 377RLBH)  
 23-cubic-foot residential refrigerator with 1,000-watt inverter  
 Wireless backup camera/monitoring system  
 39-inch tailgate TV on sliding mounting bracket (select models)  
 Second 15,000-BTU A/C (low-profile) in bedroom, tied into dual-duct system  
 Third 15,000-BTU A/C (low-profile) in front living room (383FLFS)  
 Manual 50-amp cord reel  
 Generator prep  
 5,500-watt gas generator  
 Thermal pane tinted safety glass windows  
 Second power awning (n/a on 383FLFS, 375BHFS)  
 3 slideout awnings (301RETS, 351RSTS, 311RKTS, 341RLTS)  
 4 slideout awnings (361REQS, 377RLBH)  
 5 slideout awnings (375BHFS, 383FLFS)  
 Weber® Q® Electric Grill and portable stand  
 Outside gas grill

--- See pages 4-5 for details on the Luxury Fifth Wheel and North Point Advantage packages ---



# LET'S JAYCO—AND LEAVE OUR WORRIES BEHIND.



## THE JAYCO DIFFERENCE

When you go with Jayco, you get one of the industry's strongest frames and rock-solid construction.

- 1. Vacuum-bonded walls and high-gloss, premium fiberglass exteriors** for better protection from the elements
- 2. Magnum Truss XL6 Roof System** withstands 4,500 pounds—50 percent more than other roofs
- 3. Welded aluminum frame** for a durable, lightweight structure
- 4. Double layer of fiberglass insulation** behind the front cap, plus Flexfoil® and fiberglass insulation in the floor to provide extra warmth where it's needed most—in the bedroom

- 5. Painted gelcoat fiberglass front cap** withstands the rigors of the road with infused paint and gel coating, plus ¼-inch plywood bracing for additional support—not typically found on competing fifth wheels
- 6. MOR/ryde CRE3000 rubberized suspension system** provides smoother towing and better protection from damaging road shock
- 7. Helix Cooling System with Whisper Quiet technology**
- 8. 6-point electric leveling system**
- 9. Carefree power awning** with Flex Guard fabric shield
- 10. Quad-tread aluminum entrance steps**

We know that your family fun rides on our commitment to quality. So we go the extra mile to make products that last—and stand behind them longer than anyone in the business.



## JAYCO'S ROOF VS OTHER ROOFS



4,500 POUNDS ON A JAYCO ROOF VS. OTHER ROOFS

## THE MAGNUM TRUSS XL6 ROOF SYSTEM 50 percent stronger

- 11. Keyless main entrance door**
- 12. Cargo accessory receiver**
- 13. Sidewall and roof-mount solar prep**
- 14. Magnum Frame System**
- 15. MOR/ryde pin box**



**Extend your camping season with the Jayco Climate Shield.** It protects against extreme heat and extreme freezing—even in temperatures as high as 100 degrees or as low as zero degrees (Fahrenheit).\*

### LIVING ROOM



### KITCHEN



### BATHROOM



### HOLDING TANK



### BEDROOM

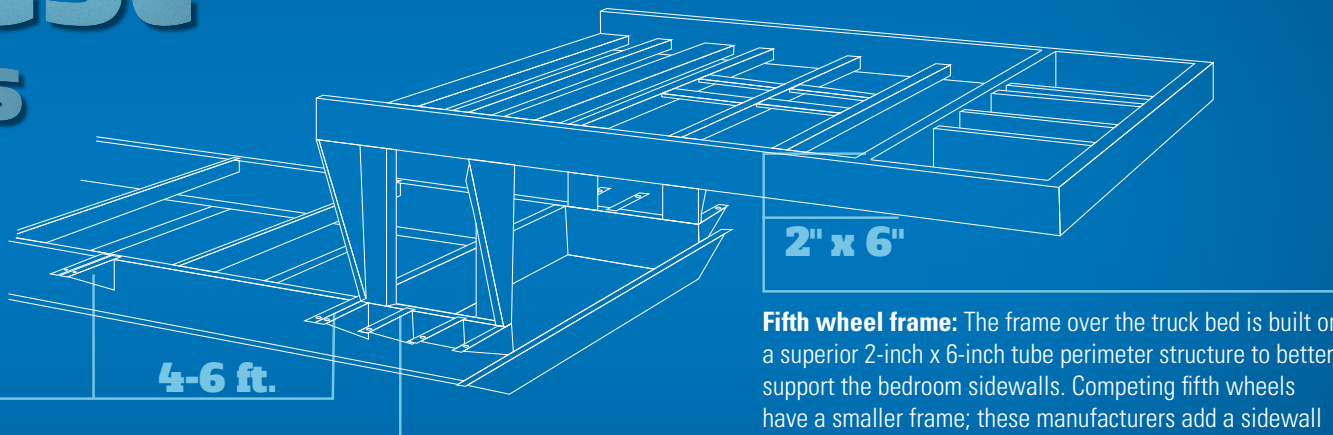


\*North Point was tested in zero degrees F and 100 degrees F weather over an extended period of time in a controlled environment and all functions of the coach were fully operational. Testing was done in a completely controlled environment; therefore, temperatures during testing may not represent actual temperatures in nature, and cannot account for elements such as wind or moisture. In actual use, unit may not perform as well. Supplier of cooling components does not guarantee anything better than 20 degrees difference from ambient temperature. In addition, outside components are subject to freezing and require steps to properly insulate. Jayco's warranty does not cover damage caused by freezing. To learn more about Climate Shield and testing done by Jayco, visit [www.jayco.com](http://www.jayco.com).

# WE START WITH ONE OF THE INDUSTRY'S **strongest** foundations

Many competitors modify or weld stock frames, which can weaken the integrity of your foundation. Jayco's custom-manufactured frames offer higher strength and durability.

**Full-width outriggers:** We build on full-width outriggers that are spaced 4-6 feet apart (vs. 8 feet) to better support the weight of the wall.



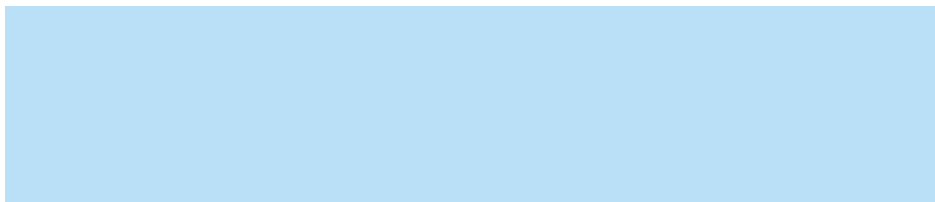
**I-class cambered structural steel I-beams:** Jayco uses a unique molded, one-piece design to prevent unit from twisting; competing three-piece I-beams can warp over time at the welded seams.

**Fifth wheel frame:** The frame over the truck bed is built on a superior 2-inch x 6-inch tube perimeter structure to better support the bedroom sidewalls. Competing fifth wheels have a smaller frame; these manufacturers add a sidewall support seam to compensate for expansion joints.

Learn more at [StrongFoundation.Jayco.com](http://StrongFoundation.Jayco.com)



Meet your Jayco Dealer



We work hard—so you can play hard. From finding the perfect Jayco for your family to providing flexible financing options and full-service support, we're here to help.

Follow Jayco



Jayco, Inc., P.O. Box 460, Middlebury, IN 46540, [www.jayco.com](http://www.jayco.com) See dealer for further information and prices. All information in this brochure is the latest available at the time of publication approval. Jayco reserves the right to make changes and to discontinue models without notice or obligation. Photos in this brochure may show optional equipment and props for photography purposes. RVs built for sale in Canada may differ to conform to Canadian codes. ©2015 Jayco, Inc. 0915-50K Printed in U.S.A.

**2**  
YEAR  
WARRANTY

**FREE**

ROADSIDE  
ASSISTANCE

Travel with confidence, with our industry-leading, bumper-to-front limited warranty and a year's access to Coach-Net™—the country's largest RV emergency road service.

For a copy of our 2-year limited warranty with full terms and conditions, please contact your local Jayco dealer.

**eco** advantage™

Jayco's long-term commitment to generations of family fun

After four years of increased efforts to eliminate waste, conserve energy and increase recycling, we've come a long way in building RVs that are not only better for your family—but also better for the planet. Learn more at [Jayco.com/EcoAdvantage](http://Jayco.com/EcoAdvantage)